

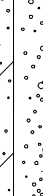




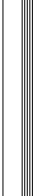



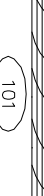








# SYMBOL LEGEND

MARK	DESCRIPTION
	EARTH
	GRAVEL
	CONCRETE (CONC.)
	CONCRETE BLOCK (C.M.U.)
	STEEL
	FINISHED WOOD
	ROUGH CUT WOOD
	WOOD BLOCKING
	WOOD STUDS
	BATT INSULATION
	RIGID INSULATION
	PLYWOOD
	DOOR DESIGNATION
	WINDOW DESIGNATION
	SITE ELEVATION DESIGNATION
	DETAIL REFERENCE
	COLUMN DESIGNATION
	BRICK

PROJECT LOCATION MAP

## Project:

RESIDENTIAL UNIT NO. KL1370ES-REV

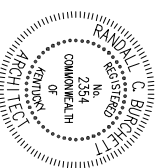
08.10.11

### DEVELOPER:

Kriss Lowry and Associates, Inc.  
 227 South Rays Fork Road  
 Corinth, Kentucky 41010-3027  
 Ph. (502)-857-2800

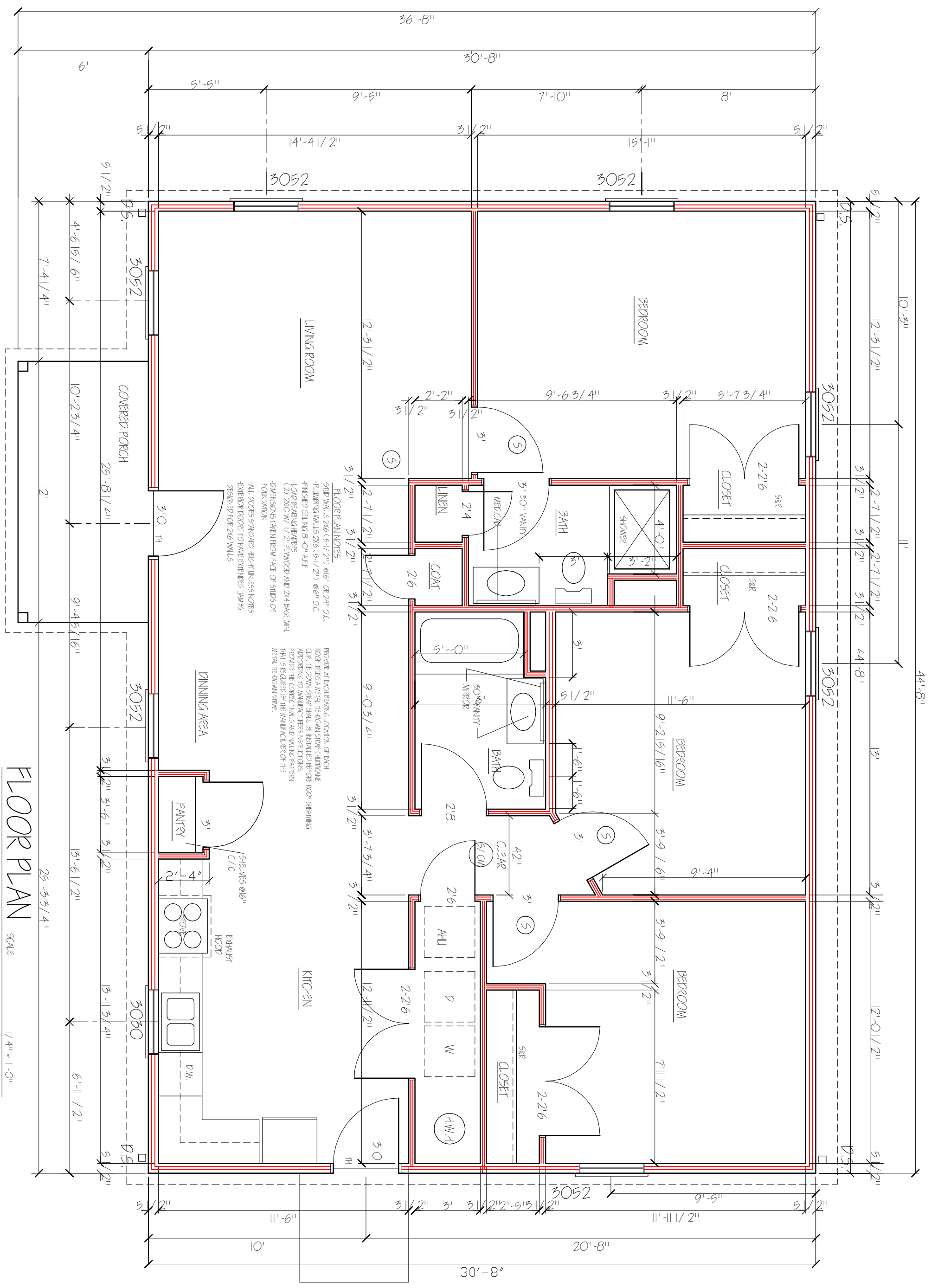
### ARCHITECT:

Randall C. Burchett  
 233 West Court Street, Suite 200  
 Prestonsburg, Ky. 41653  
 PH. 606/886-3929 FAX. 606/886-0289



## INDEX OF DRAWINGS

SHEET	DESCRIPTION
TL	TITLE SHEET/DATA
A-1	COMPOSIT FLOOR PLAN
A-2	FOUNDATION PLAN
A-3	ELEVATIONS
A-4	ELEVATIONS
A-5	TYPICAL WALL SECTION
	NOTES



**FLOOR PLAN**  
SCALE 1/4" = 1'-0"

**KRISS LOWRY & ASSOCIATES**  
CORINTH, KY

KL-1370ES-REV

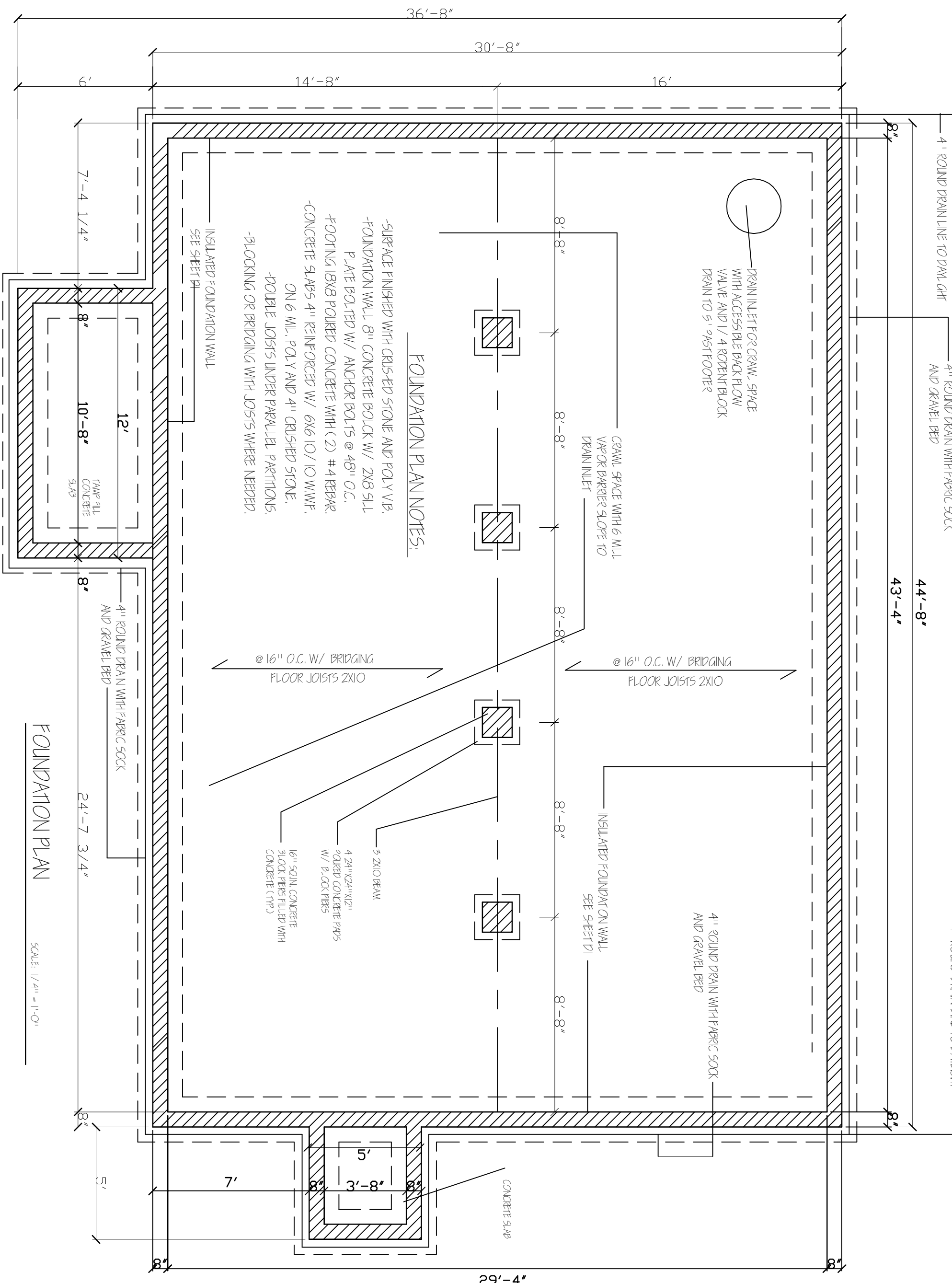


**RANDALL C. BURCHETT & ASSOCIATES**  
**ARCHITECT**  
322 WEST COURT ST. PRESTONSBURG, KENTUCKY 41653  
PH. 606.886.3929 FAX. 606.886.0289

DATE:	05/27/08
REVISED:	11-04-11
REVISED:	
REVISED:	
DRAWN BY:	RCB
JOB NO.:	1370ES-REV



SHEET NUMBER



**FOUNDATION PLAN NOTES:**

- SURFACE FINISHED WITH CRUSHED STONE AND POLY V.B.
- FOUNDATION WALL 8" CONCRETE BLOCK W/ 2X8 SILL PLATE BOLTED W/ ANCHOR BOLTS @ 48" O.C.
- FOOTING 18X8 POURED CONCRETE WITH (2) #4 REBAR.
- CONCRETE SLABS 4" REINFORCED W/ 6X6 IO/IO W.W.F. ON 6 MIL. POLY AND 4" CRUSHED STONE.
- DOUBLE JOISTS UNDER PARALLEL PARTITIONS.
- BLOCKING OR BRIDGING WITH JOISTS WHERE NEEDED.

INSULATED FOUNDATION WALL  
SEE SHEET D1

7'-4 1/4"

12'

10'-8"

8"

4" ROUND DRAIN WITH FABRIC SOCK AND GRAVEL BED

24'-7 3/4"

8"

5'

8"

7'

8"

8"

8"

8"

8"

8"

8"

8"

8"

8"

8"

8"

8"

8"

8"

8"

8"

8"

8"

8"

8"

8"

8"

8"

8"

8"

8"

8"

8"

8"

8"

8"

8"

8"

8"

8"

8"

8"

8"

8"

8"

8"

8"

8"

8"

8"

8"

8"

8"

8"

8"

8"

8"

8"

8"

8"

8"

8"

8"

8"

8"

8"

8"

8"

8"

8"

8"

8"

8"

8"

8"

8"

8"

8"

8"

8"

8"

8"

8"

8"

8"

8"

8"

8"

8"

8"

8"

8"

8"

8"

8"

8"

8"

8"

8"

8"

8"

8"

8"

8"

8"

8"

8"

8"

8"

8"

8"

8"

8"

8"

8"

8"

8"

8"

8"

8"

8"

8"

8"

8"

8"

8"

8"

8"

8"

8"

8"

8"

8"

8"

8"

8"

8"

8"

8"

8"

8"

8"

8"

8"

8"

8"

8"

8"

8"

8"

8"

8"

8"

8"

8"

8"

8"

8"

8"

8"

8"

8"

8"

8"

8"

8"

8"

8"

8"

8"

8"

8"

8"

8"

8"

8"

8"

8"

8"

8"

8"

8"

8"

8"

8"

8"

8"

8"

8"

8"

8"

8"

8"

8"

8"

8"

8"

8"

8"

8"

8"

8"

8"

8"

8"

8"

8"

8"

8"

8"

8"

8"

8"

8"

8"

8"

8"

8"

8"

8"

8"

8"

8"

8"

8"

8"

8"

8"

8"

8"

8"

8"

8"

8"

8"

8"

8"

8"

8"

8"

8"

8"

8"

8"

8"

8"

8"

8"

8"

8"

8"

8"

8"

8"

8"

8"

8"

8"

8"

8"

8"

8"

8"

8"

8"

8"

8"

8"

8"

8"

8"

8"

8"

8"

8"

8"

8"

8"

8"

8"

8"

8"

8"

8"

8"

8"

8"

8"

8"

8"

8"

8"

CONTRIDGE VENT

CLASS 1/4" FIBERGLASS SHINGLES OVER

30 LBS FELT OVER 7/16" OSB SHEATHING WITH 1/4" CLPS

CONTINUOUS ALUMINUM DRIP EDGE

5" PRE-FINISHED ALL OCEE QUATER

VINYL DOUBLE HUNG WINDOW WITH INSULATED GLASS AND INSECT SCREEN.

PRE-FINISHED WINDOW SHUTTERS

CORNER BOARD

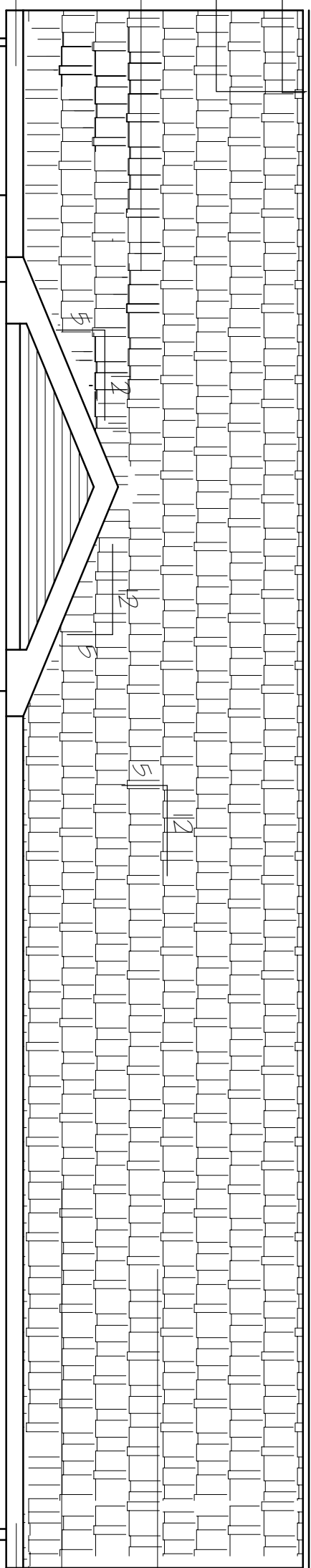
4" BEVELED VINYL SIDING OVER TYVEK HOUSE WRAP

PRE-FINISHED ALUM. DOWNSPOUT TIE TO DRAIN BOOT AND 4" PPE DRAIN

GRADE

FOOTER / FOUNDATION SYSTEM BELOW

CONTRIDGE VENT



FRONT ELEVATION

1/4" = 1'-0" SCALE

DATE: 03.27.08

REVISED: 11.04.11

REVISED:

DRAWN BY: RCB

JOB NO: 1370ES-REV



RANDALL C. BURCHETT & ASSOCIATES  
ARCHITECT  
322 WEST COURT ST. PRESTONSBURG, KENTUCKY 41653  
PH. 606.586.3929 FAX. 606.586.0259

KL-1370ES-REV

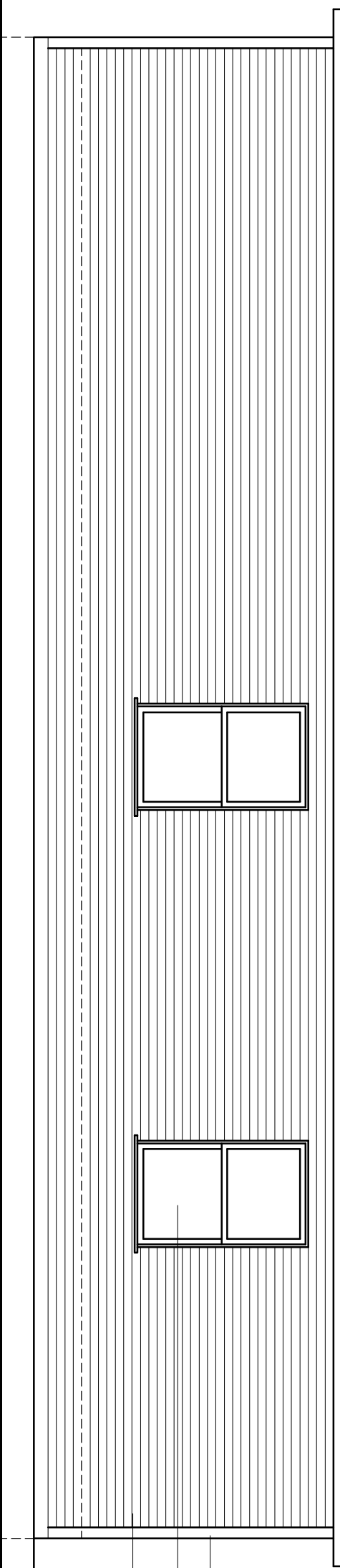
KRIS LOWRY & ASSOCIATES  
CORINTH, KY

SHEET NUMBER

A3

REAR ELEVATION

SCALE 1/4" = 1'-0"

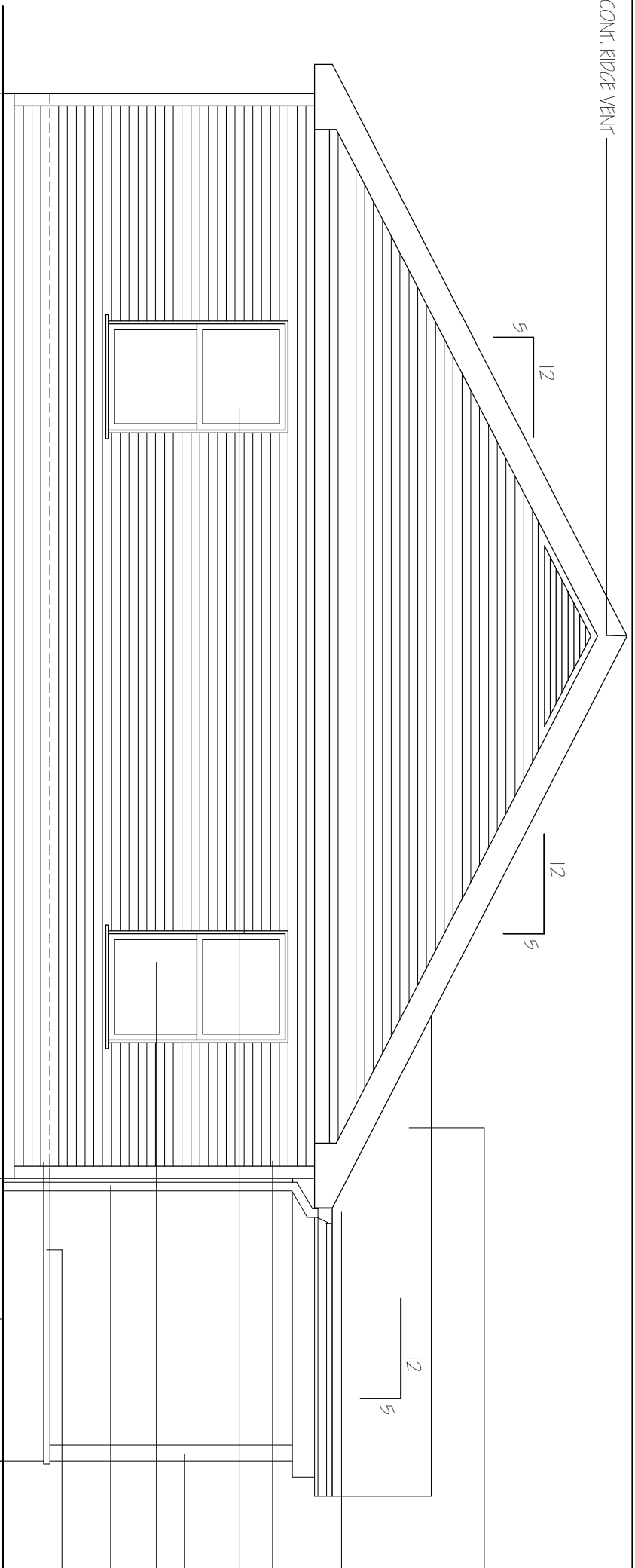


FOOTER / FOUNDATION SYSTEM BELOW

GRADE

CLASS 1/4" FIBERGLASS SHINGLES OVER 30 LBS FELT OVER 7/16" OSB SHEATHING WITH 1/4" CLPS  
CONTINUOUS ALUMINUM DRIP EDGE  
5" PRE-FINISHED ALL OCEE QUATER  
VINYL DOUBLE HUNG WINDOW WITH INSULATED GLASS AND INSECT SCREEN.  
CORNER BOARD  
4" BEVELED VINYL SIDING OVER TYVEK HOUSE WRAP ON 7/16" OSB SHEATHING  
PRE-FINISHED ALUM. DOWNSPOUT TIE TO DRAIN BOOT AND 4" PPE DRAIN

CONT. RIDGE VENT



LEFT SIDE ELEVATION

1/4" = 1'-0"

SCALE

CONT. RIDGE VENT

CLASS "A" FIBERGLASS SHINGLES OVER 30 LBS FELT OVER 7/16" OSB SHEATHING WITH 1/4" CLIPS

5" PRE-FINISHED ALU. OGEE GUTTER

CORNER BOARD

LOAD BEARING ALUM. COLUMN

4" BEVELED VINYL SIDING OVER TWEK HOUSE WRAP ON 7/16" OSB SHEATHING

PRE-FINISHED ALUM. DOWNSPOUT TIE TO DRAIN BOOT AND 4" PIPE DRAIN

GRADE

FOOTER / FOUNDATION SYSTEM BELOW

CLASS "A" FIBERGLASS SHINGLES OVER 30 LBS FELT OVER 7/16" OSB SHEATHING WITH 1/4" CLIPS

5" PRE-FINISHED ALU. OGEE GUTTER

CORNER BOARD

VINYL DOUBLE HUNG WINDOW WITH INSULATED GLASS AND INSECT SCREEN

LOAD BEARING ALUM. COLUMN

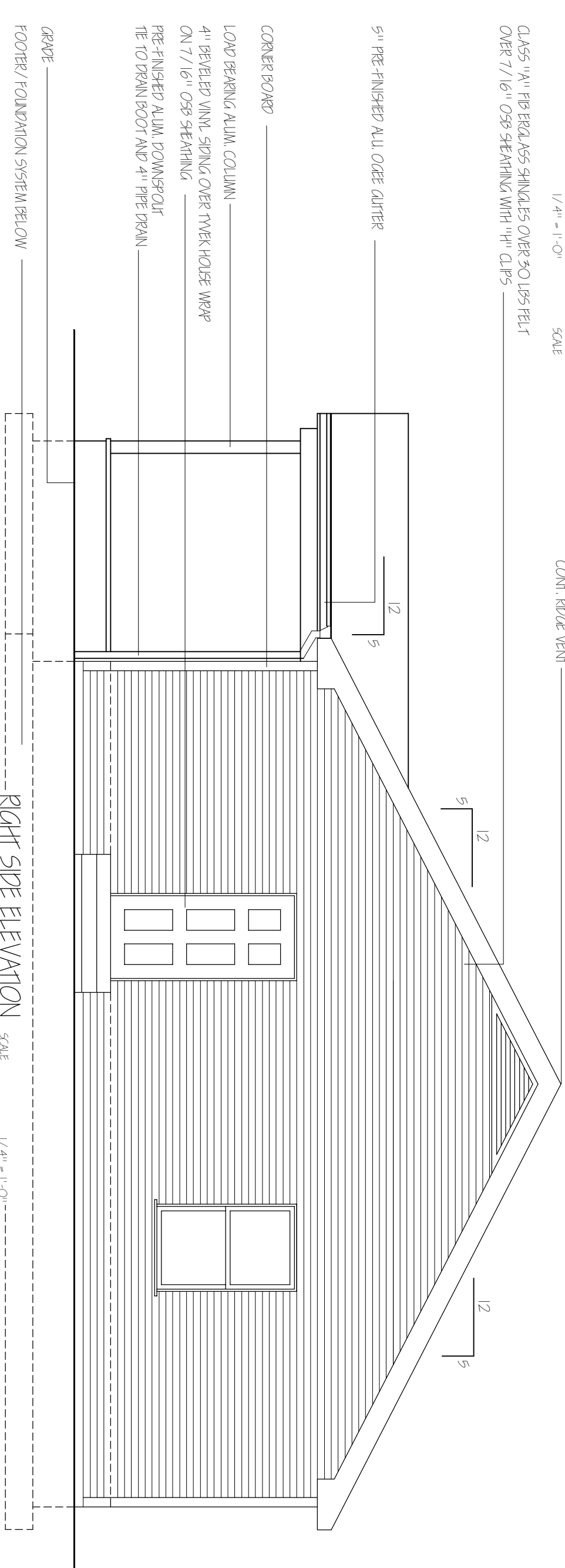
4" BEVELED VINYL SIDING OVER TWEK HOUSE WRAP ON 7/16" OSB SHEATHING

PRE-FINISHED ALUM. DOWNSPOUT TIE TO DRAIN BOOT AND 4" PIPE DRAIN

CONCRETE SLAB PORCH

GRADE

FOOTER / FOUNDATION SYSTEM BELOW



RIGHT SIDE ELEVATION

SCALE

1/4" = 1'-0"

DATE: 03.27.08  
 REMISED: 11.04.11  
 REMISED:  
 DRAWN BY: RCB  
 JOB NO: 370ES-REV



RANDALL C. BURCHETT & ASSOCIATES  
 ARCHITECT  
 322 WEST COURT ST. PRESTONSBURG, KENTUCKY 41653  
 PH. 606.886.3929 FAX. 606.886.0289

SHEET NUMBER

KRISS LOWRY & ASSOCIATES  
CORINTH, KY

KL1370ES-REV



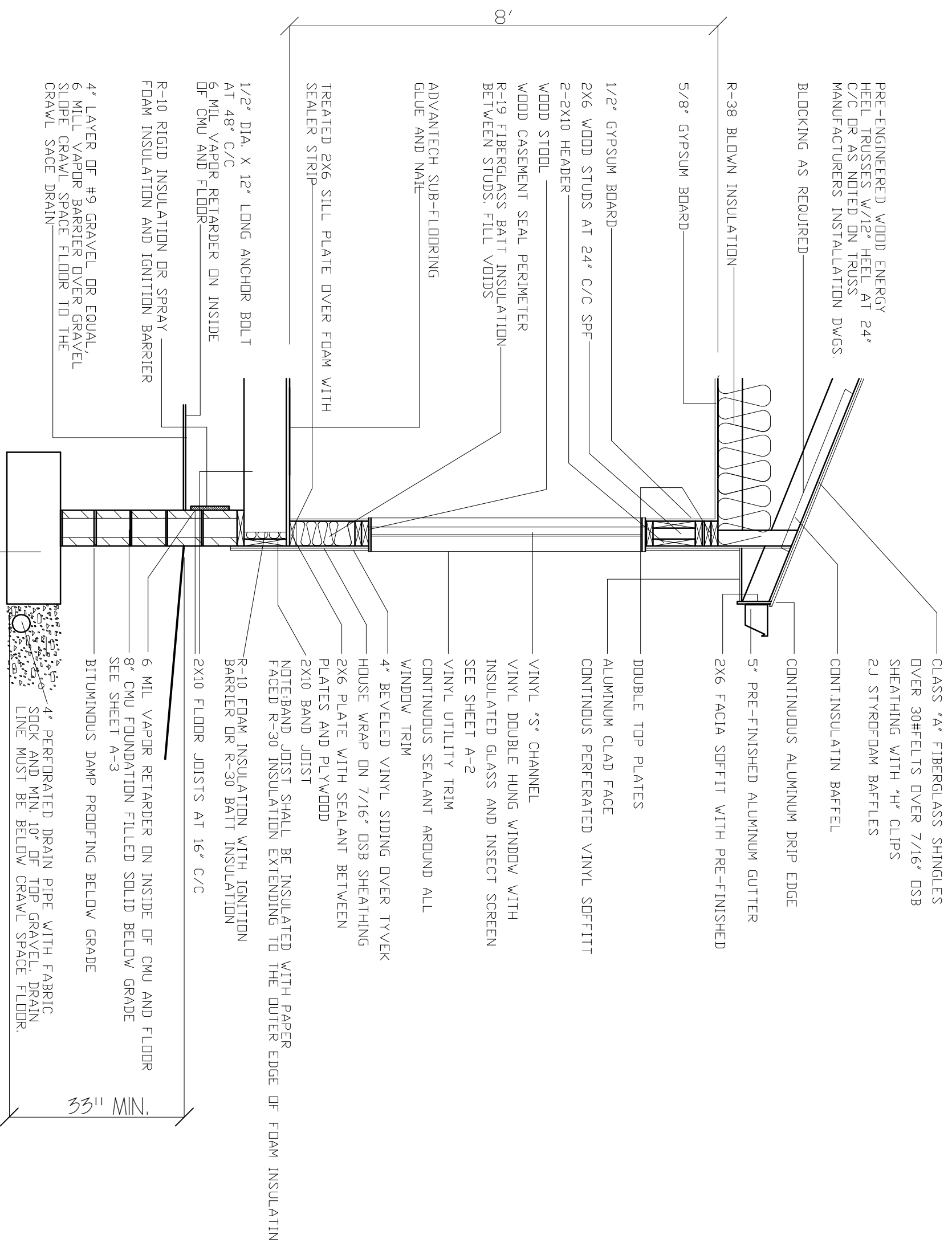
DATE:	12.02.10
REVISED:	02.04.11
REVISED:	10-21-11
REVISED:	
DRAWN BY:	RCB
JOB NO:	ES-A



RANDALL C. BURCHETT & ASSOCIATES  
ARCHITECT  
233 WEST COURT STREET, PRESTONSBURG, KENTUCKY 41653  
PH. 606.886.3929 FAX. 606.886.0289

KRISS LOWRY & ASSOCIATES, INC.  
CORINTH, KY

SHEET NUMBER



PRE-ENGINEERED WOOD ENERGY HEEL TRUSSES W/12" HEEL AT 24" C/C OR AS NOTED ON TRUSS MANUFACTURERS INSTALLATION DWGS.

BLOCKING AS REQUIRED

R-38 BLOWN INSULATION

5/8" GYPSUM BOARD

1/2" GYPSUM BOARD

2X6 WOOD STUDS AT 24" C/C SPF

2-2X10 HEADER

WOOD STOOD

WOOD CASSEMENT SEAL PERIMETER

R-19 FIBERGLASS BATT INSULATION BETWEEN STUDS. FILL VOIDS

ADVANTECH SUB-FLOORING GLUE AND NAIL

TREATED 2X6 SILL PLATE OVER FOAM WITH SEALER STRIP

1/2" DIA. X 12" LONG ANCHOR BOLT AT 48" C/C

6 MIL VAPOR RETARDER ON INSIDE OF CMU AND FLOOR

R-10 RIGID INSULATION OR SPRAY FOAM INSULATION AND IGNITION BARRIER

4" LAYER OF #9 GRAVEL OR EQUAL, 6 MIL VAPOR BARRIER OVER GRAVEL, SLOPE CRAWL SPACE FLOOR TO THE CRAWL SPACE DRAIN

CLASS "A" FIBERGLASS SHINGLES OVER 30#FELTS OVER 7/16" OSB SHEATHING WITH "H" CLIPS 2J STYROFOAM BAFFLES

CONT. INSULATIN BAFFEL

CONTINUOUS ALUMINUM DRIP EDGE

5" PRE-FINISHED ALUMINUM GUTTER

2X6 FACIA SOFFIT WITH PRE-FINISHED

DOUBLE TOP PLATES

ALUMINUM CLAD FACE CONTINUOUS PERFERATED VINYL SOFFIT

VINYL "S" CHANNEL

VINYL DOUBLE HUNG WINDOW WITH INSULATED GLASS AND INSECT SCREEN SEE SHEET A-2

VINYL UTILITY TRIM CONTINUOUS SEALANT AROUND ALL WINDOW TRIM

4" BEVELED VINYL SIDING OVER TYVEK HOUSE WRAP ON 7/16" OSB SHEATHING

2X6 PLATE WITH SEALANT BETWEEN PLATES AND PLYWOOD

2X10 BAND JOIST

NOTE: BAND JOIST SHALL BE INSULATED WITH PAPER FACED R-30 INSULATION EXTENDING TO THE OUTER EDGE OF FOAM INSULATIN

R-10 FOAM INSULATION WITH IGNITION BARRIER OR R-30 BATT INSULATION

2X10 FLOOR JOISTS AT 16" C/C

6 MIL VAPOR RETARDER ON INSIDE OF CMU AND FLOOR

8" CMU FOUNDATION FILLED SOLID BELOW GRADE SEE SHEET A-3

BITUMINOUS DAMP PROOFING BELOW GRADE

4" PERFORATED DRAIN PIPE WITH FABRIC SOCK AND MIN. 10" OF TOP GRAVEL. DRAIN LINE MUST BE BELOW CRAWL SPACE FLOOR.

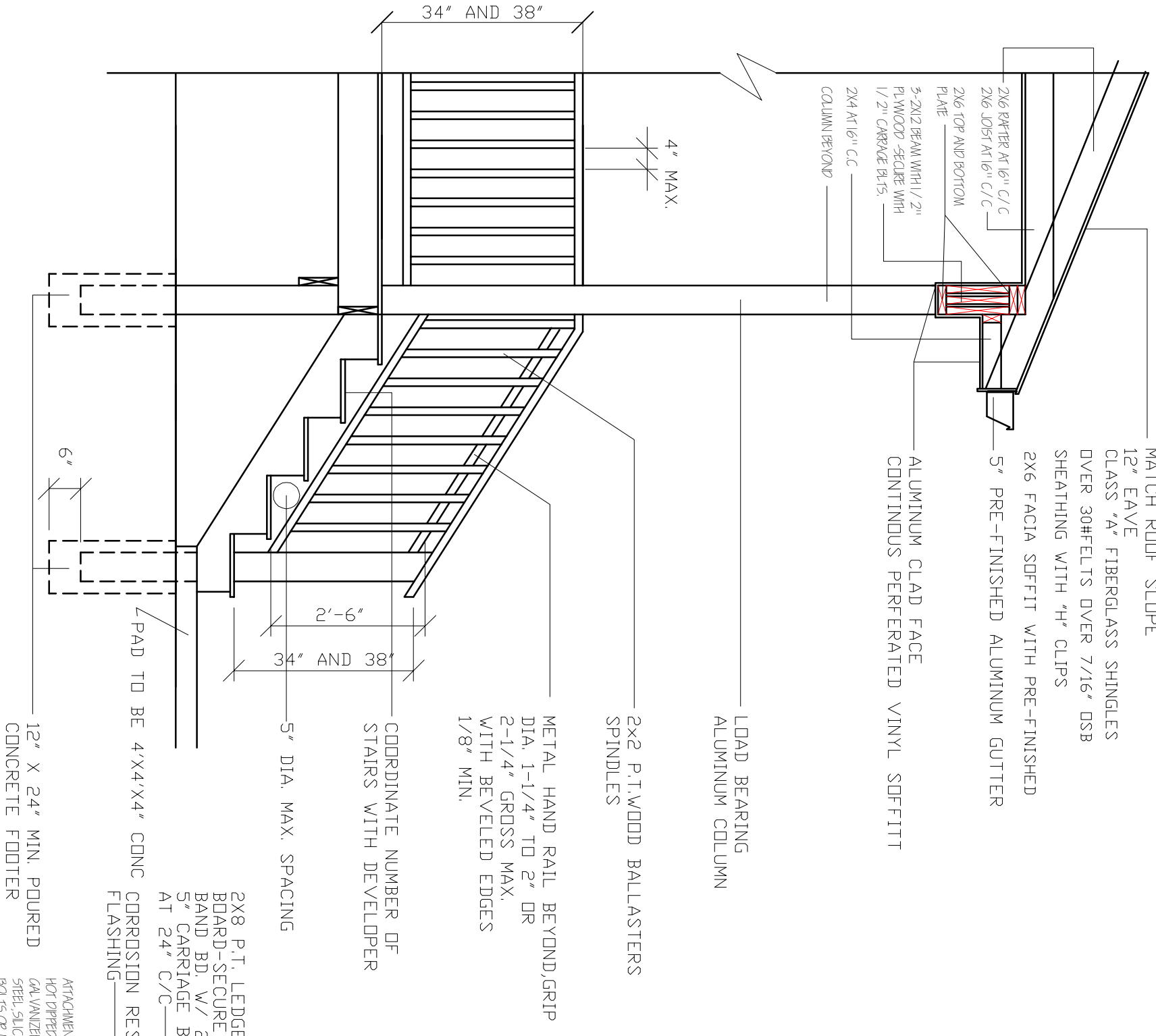
CONT. CONCRETE FOOTING REINFORCED WITH (2) #4 BARS CONT. AND #4 REBAR PERPENDICULAR @ 4" C/C-SEE FOUNDATION PLAN SHEET A-3

33" MIN.

# TYPICAL WALL SECTION

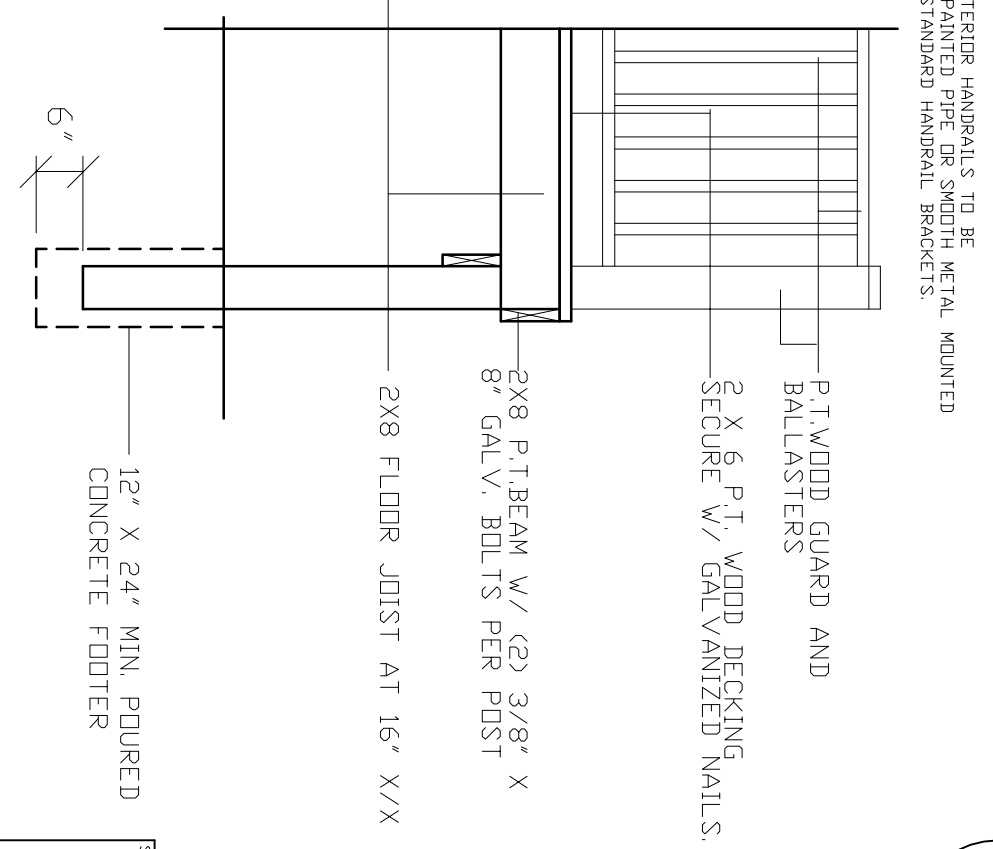
SCALE 1/2" = 1'-0"

MATCH ROOF SLOPE  
 12" EAVE  
 CLASS "A" FIBERGLASS SHINGLES  
 OVER 30# FELTS OVER 7/16" OSB  
 SHEATHING WITH "H" CLIPS  
 2X6 FACIA SOFFIT WITH PRE-FINISHED  
 5" PRE-FINISHED ALUMINUM GUTTER  
 ALUMINUM CLAD FACE  
 CONTINUOUS PERFORATED VINYL SOFFIT



WOOD PORCH  
 SCALE 1/2" = 1'-0"  
 A  
 D2

WOOD PORCH SECTION  
 SCALE 1/2" = 1'-0"  
 B  
 D2



WOOD PORCH  
 SCALE 1/2" = 1'-0"  
 A  
 D2

WOOD PORCH SECTION  
 SCALE 1/2" = 1'-0"  
 B  
 D2

- PORCH NOTES:
1. EACH EXTERIOR DOOR A MIN. 60" X 60" LANDING.
  2. LANDING NO MORE THAN 1-1/2' BELOW TOP OF THRESHOLD.
  3. ALL PORCHES AND LANDINGS TO BE OF CONCRETE CONSTRUCTION.
  4. TREATED WOOD PORCHES ALLOWED W/ PROJECT MANAGERS APPROVAL

LANDING NOTES:

1. ALL PORCHES W/ FLOORS MORE THAN 30" ABOVE THE FINISH GRADE ANYWHERE TO HAVE GUARDRAILS. OPEN SIDES OF STAIRS W/ TOTAL RISE MORE THAN 30" TO HAVE A GUARD RAIL.
2. TOP OF GUARDRAILS TO BE MIN. 34" MAX. 38" ABOVE FLOOR SURFACE.

STAIRS NOTES:

1. TRIANGULAR SHAPE BETWEEN TREAD AND BOTTOM RAIL NOT TO ALLOW A 6" DIAM. SPHERE THROUGH. PORCH STEPS TO HAVE 42" NET CLEAR WIDTH.
2. MAX. RISER HEIGHT TO BE 7" MIN. TREAD TO BE 11"
3. ALL STAIRWAYS OF 3 OR MORE RAISERS TO HAVE A HANDRAIL ON AT LEAST ONE SIDE.
4. ALL HANDRAILS TO BE CONTINUOUS THE FULL LENGTH OF STAIRS. ENDS TO BE RETURNED OR TERMINATED IN NEVEL POST OR SAFETY TERMINAL.
5. HANDRAILS ADJACENT TO A WALL SHALL HAVE A SPACE NOT LESS THAN 1-1/2" BETWEEN THE TWO HANDRAILS INTERRUPTED BY NEVEL POST AT TURN ONLY
6. SIZE OF HANDRAILS: 1-1/2" - 2" DIAM. OR MAX. 2-1/4" CROSS
7. HANDRAILS SHALL BE SOLIDLY FIXED
8. SPACE BETWEEN SPINDLES 4" MAX.
9. ALL FRONT PORCHES 6X12' UNLESS SPEC'D BY P.M.
10. ALL PORCH STAIRS TO HAVE THREE (3) 2" X 12" STRINGERS.
11. PORCH STEPS SHALL HAVE A CONCRETE PAD TO SUPPORT STAIR CARRIAGE THAT LEAVES A 4' X 4' CLEAR LANDING @ BASE OF STEPS
12. ALL EXTERIOR HANDRAILS TO BE 1-1/2" PAINTED PIPE OR SMOOTH METAL MOUNTED USING STANDARD HANDRAIL BRACKETS.

DATE: 12.02.10  
 REVISED: 12.09.10  
 REVISED:  
 DRAWN BY: RCB  
 JOB NO: ES-A



RANDALL C. BURCHETT & ASSOCIATES  
 ARCHITECT  
 233 WEST COURT STREET PRESTONSBURG, KENTUCKY 41653  
 PH. 606.886.3929 FAX. 606.886.0289

KRISS LOWRY & ASSOCIATES, INC.  
 CORINTH, KY

SHEET NUMBER  
 1

