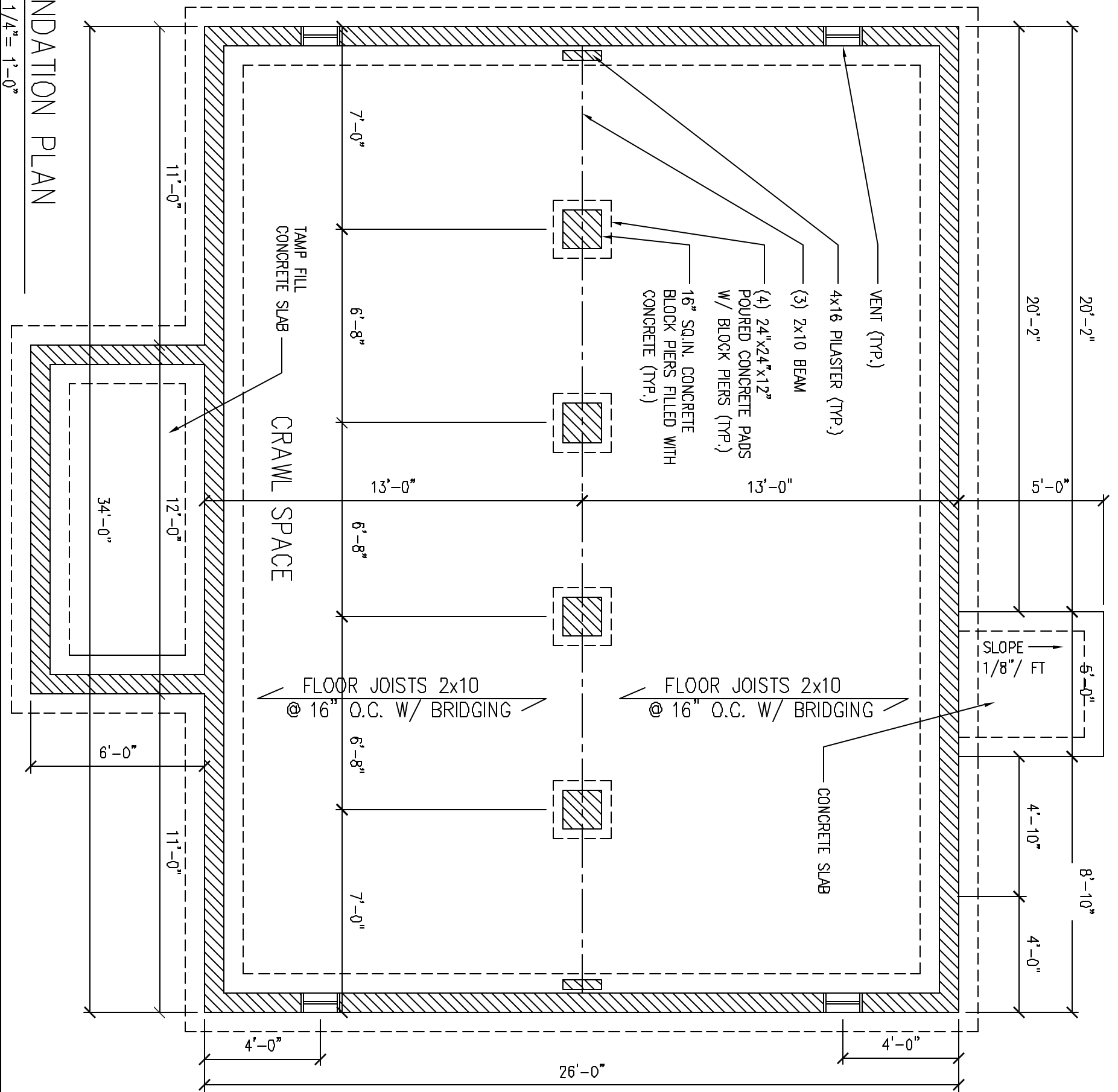


1 A.2 FOUNDATION PLAN  
SCALE: 1/4" = 1'-0"



**FOUNDATION PLAN NOTES:**

- SURFACE FINISHED WITH CRUSHED STONE AND POLY V.B.
- FOUNDATION WALL 8" CONCRETE BLOCK WITH 2x 8 SILL PLATE BOLTED WITH ANCHOR BOLTS @ 48" O.C.
- FOOTING 18x 8 POURED CONCRETE WITH (2) #4 REBAR.
- CONCRETE SLABS 4" REINFORCED WITH 6x 6 10/10 W.W.F. ON 6 MIL. POLY AND 4" CRUSHED STONE.
- DOUBLE JOISTS UNDER PARALLEL PARTITIONS.
- BLOCKING OR BRIDGING WITH JOISTS WHERE NEEDED.

THE FOUNDATION PLAN  
DATE: MARCH 5, 2004  
REV: \_\_\_\_\_  
REV: \_\_\_\_\_

A.2

Sheet



PHOENIX RISING  
ARCHITECTURAL DESIGN

711 Lyndon Lane  
Louisville KY, 40222  
362.429.8896  
Fax: 362.429.8897

**KRISS LOWRY & ASSOCIATES**  
CORINTH, KY.

2BED-884-A

0000  
All drawings and specifications are prepared by the architect and are subject to change without notice. The contractor is responsible for verifying all dimensions and conditions of the site before construction. The architect is not responsible for any errors or omissions in the drawings or specifications. The contractor is responsible for obtaining all necessary permits and for complying with all applicable codes and regulations. The architect is not responsible for any delays or cost overruns caused by the contractor. The architect is not responsible for any damage to the site or property caused by the contractor. The architect is not responsible for any safety issues or accidents caused by the contractor. The architect is not responsible for any environmental issues or pollution caused by the contractor. The architect is not responsible for any other issues or liabilities caused by the contractor.