

All drawings are prepared in accordance with the standards of the American Institute of Architects and the standards of the American Institute of Professional Surveyors. The engineer, architect, or other professional responsible for the design of the project shall be responsible for the accuracy of the information provided to the engineer, architect, or other professional. The engineer, architect, or other professional shall be responsible for the accuracy of the information provided to the engineer, architect, or other professional.

**KRISS LOWRY & ASSOCIATES**  
CORINTH, KY.

3BED-1220-A

3422 Kirby Lane  
Louisville KY, 40209  
502.429.6806  
Fax 502.348.1213

**PHOENIX RISING**  
ARCHITECTURAL DESIGN



Sheet

A.2

The FOUNDATION PLAN

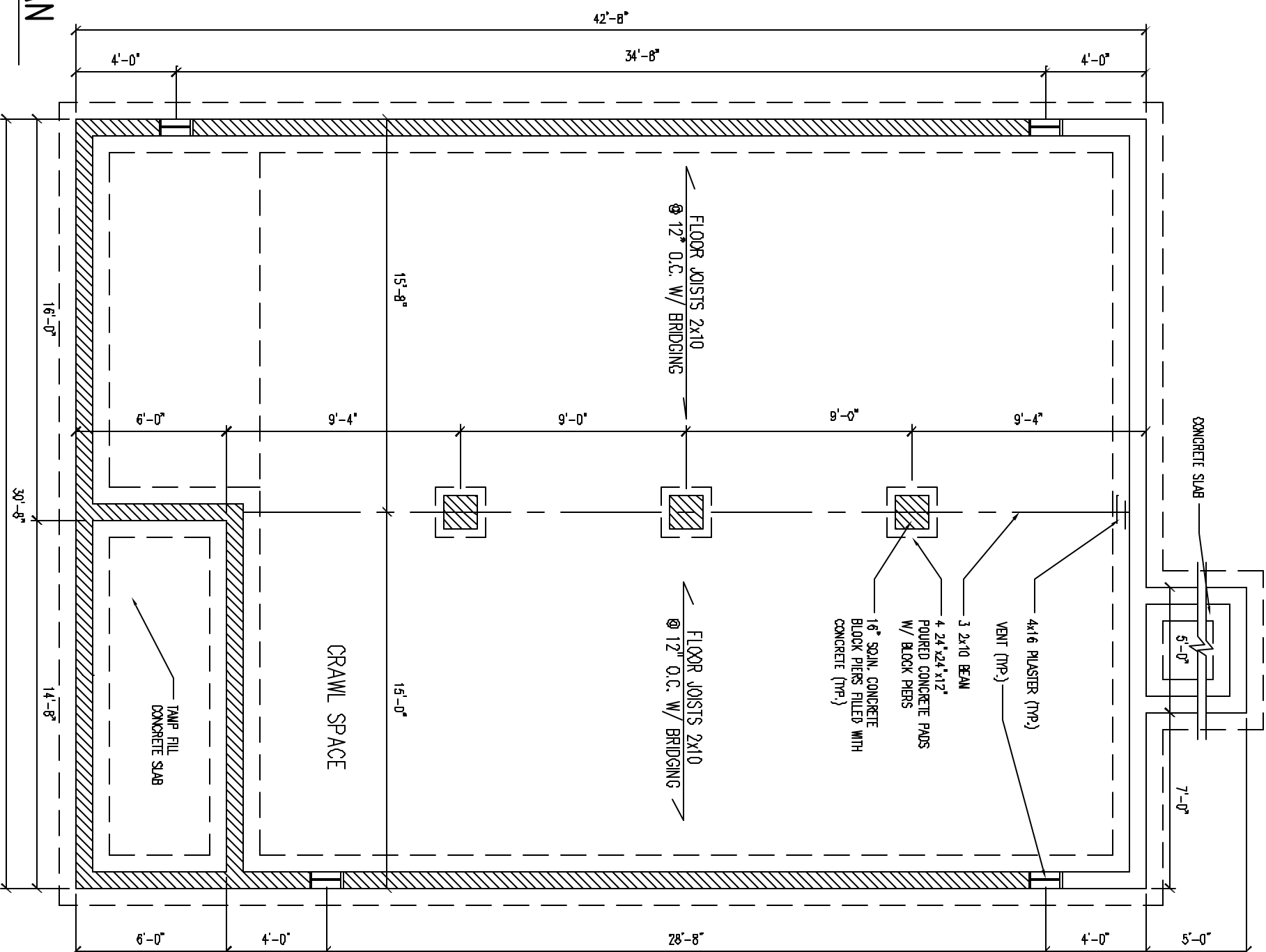
Date: JUNE 23, 2005

Rev: \_\_\_\_\_  
Rev: \_\_\_\_\_  
Rev: \_\_\_\_\_

1  
A.2

**FOUNDATION PLAN**

SCALE: 3/16" = 1'-0"



**FOUNDATION PLAN NOTES:**

- SURFACE FINISHED WITH CRUSHEDSTONE AND POLY V.B.
- FOUNDATION WALL 8" CONCRETE BLOCK WITH 2x 8 SILL PLATE BOLTED WITH ANCHOR BOLTS @ 48" O.C.
- FOOTING 18x 8 Poured CONCRETE WITH (2) #4 REBAR.
- CONCRETE SLABS 4" REINFORCED WITH 6x 6 10/10 W.W.F. ON 6 MIL. POLY AND 4" CRUSHED STONE.
- DOUBLE JOISTS UNDER PARALLEL PARTITIONS.
- BLOCKING OR BRIDGING WITH JOISTS WHERE NEEDED.