





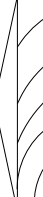


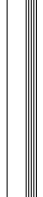










SYMBOL LEGEND

MARK	DESCRIPTION
	EARTH
	GRAVEL
	CONCRETE (CONC.)
	CONCRETE BLOCK (C.M.U.)
	STEEL
	FINISHED WOOD
	ROUGH CUT WOOD
	WOOD BLOCKING
	WOOD STUDS
	BATT INSULATION
	RIGID INSULATION
	PLYWOOD
	DOOR DESIGNATION
	WINDOW DESIGNATION
	SITE ELEVATION DESIGNATION
	DETAIL REFERENCE
	COLUMN DESIGNATION
	BRICK

PROJECT LOCATION MAP

Project:

RESIDENTIAL UNIT NO.  
1064ES-B-BASE-REV

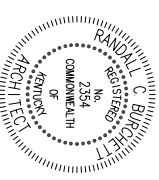
12.17.10

DEVELOPER:

Kriss Lowry and Associates, Inc.  
227 South Rays Fork Road  
Corinth, Kentucky 41010-3027  
Ph. (502)-857-2800

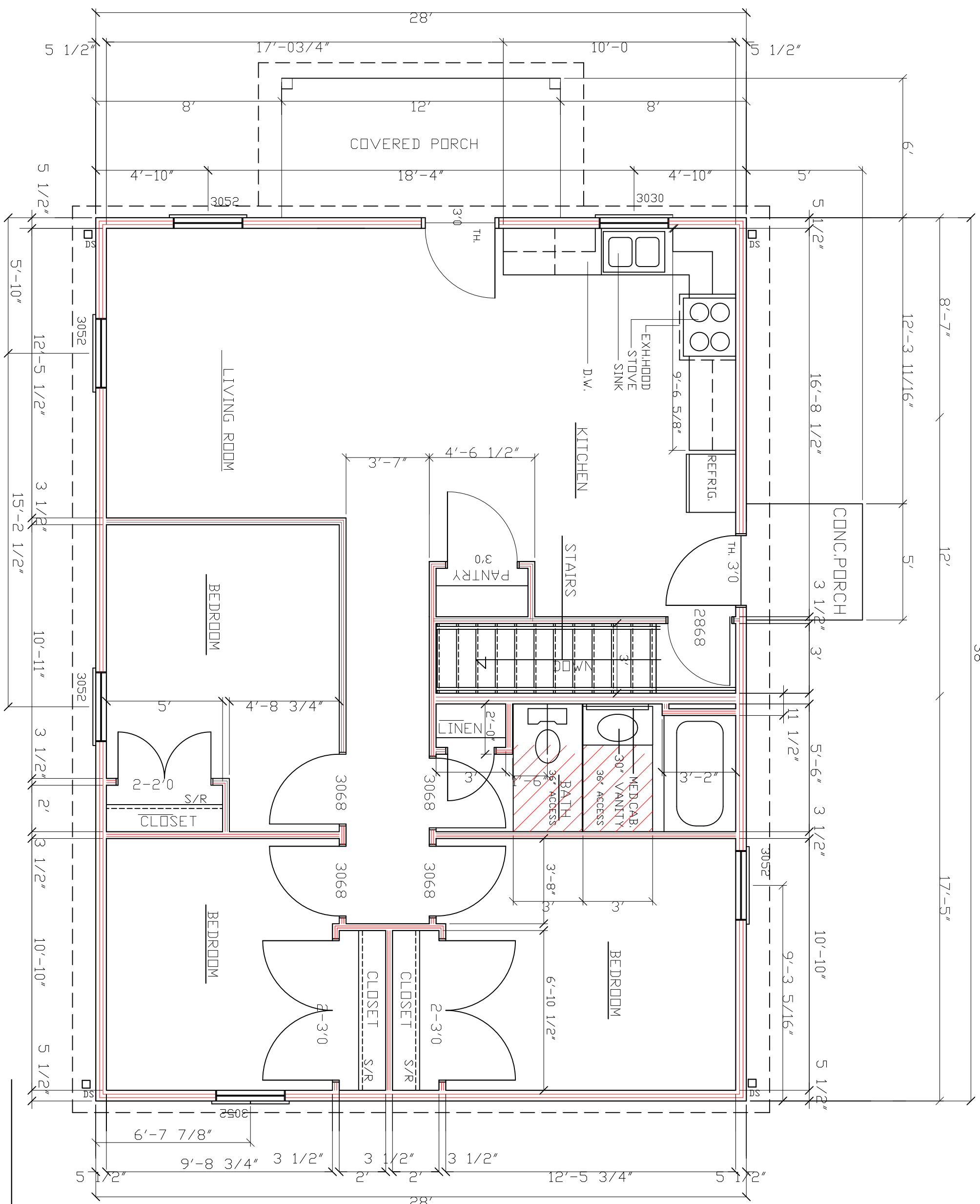
ARCHITECT:

Randall C. Burchett  
233 West Court Street, Suite 200  
Prestonsburg, Ky. 41653  
PH. 606/886-3929 FAX. 606/886-0289



INDEX OF DRAWINGS

SHEET	DESCRIPTION
TL	TITLE SHEET/DATA
A-1	COMPOSIT FLOOR PLAN
A-2	FOUNDATION PLAN
A-3	ELEVATIONS
A-4	ELEVATIONS
A-5	ELEVATIONS
A-6	ELEVATIONS
D-1	TYPICAL WALL SECTION



FLOOR PLAN NOTES:

- STUD WALLS 2X6 (5-1/2") @16" OR 24" O.C.
  - PLUMBING WALLS 2X6 (5-1/2") @16" O.C.
  - FINISHED CEILING 8'-0" A.F.F.
  - LOAD BEARING HEADERS (2) 2X10 W/ 1/2" PLYWOOD AND 2X4 BASE MIN. DIMENSIONS TAKEN FROM FACE OF STUDS OR FOUNDATION
  - ALL DOORS STANDARD HEIGHT UNLESS NOTES
  - EXTERIOR DOORS TO HAVE EXTENDED JAMBS DESIGNED FOR 2X6 WALLS
- PROVIDE AT EACH BEARING LOCATION OF EACH ROOF TRUSS A METAL TIE-DOWN STRAP (HURRICANE CLIP). THE DOWN STRAP SHALL BE INSTALLED BEFORE WALL SHEATHING ON EXTERIOR. THE TIE-DOWN STRAP MUST LAP THE TOP CHORD OF THE TRUSS BY AT LEAST 2 INCHES AND THE TOP PLATE OF THE WALL. PROVIDE THE CORRECT NAILS AND NAILING PATTERN THAT IS REQUIRED BY THE MANUFACTURER OF THE METAL TIE-DOWN STRAP.

KRISS LOWRY & ASSOCIATES, INC.  
CORINTH, KY

**RANDALL C. BURCHETT & ASSOCIATES ARCHITECT**  
322 WEST COURT ST. PRESTONSBURG, KENTUCKY 41653  
PH. 606.886.3929 FAX. 606.886.0289

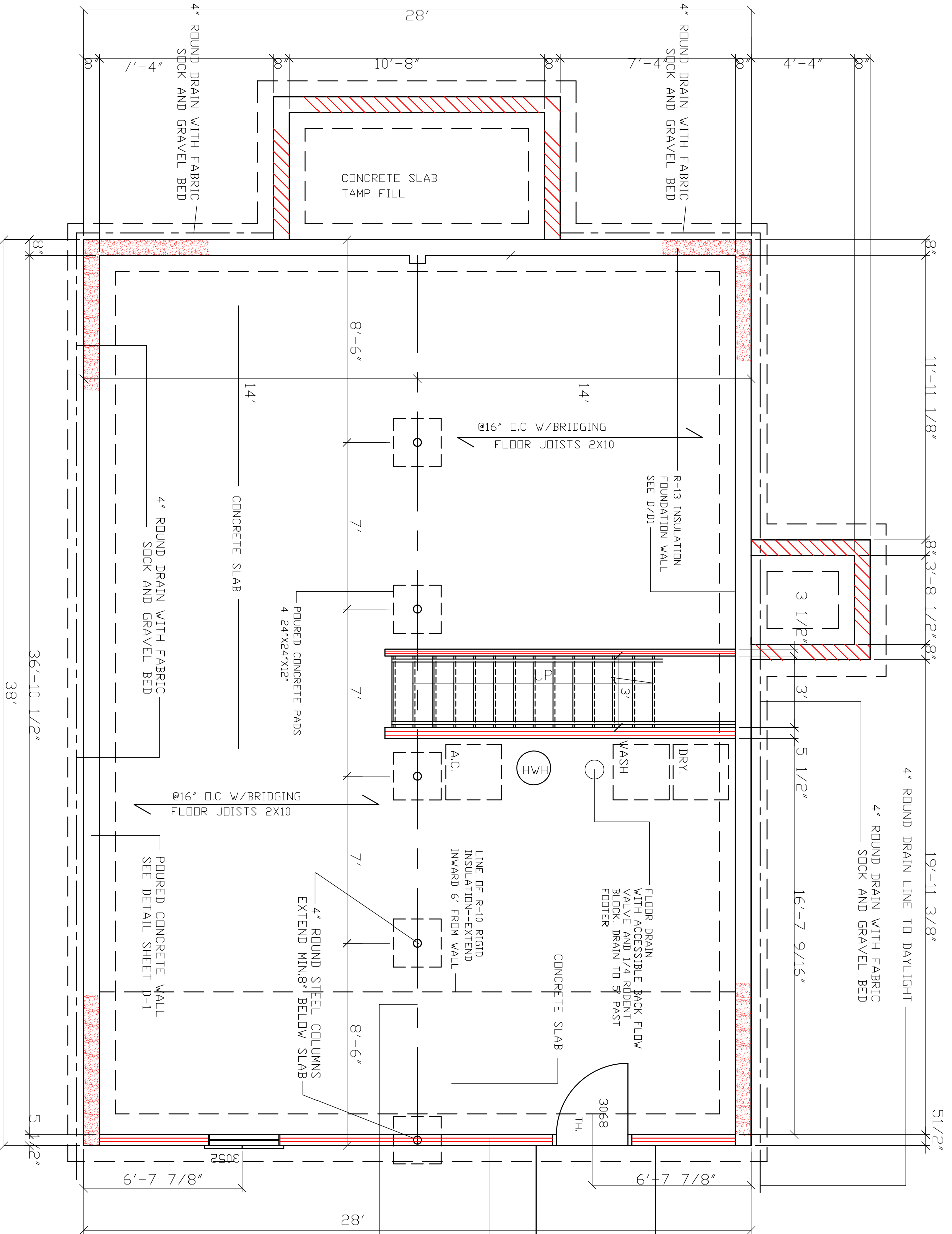
DATE: 12.17.10  
REVISED:  
REVISED:  
DRAWN BY: RCB  
JOB NO.: 1064ES-B-BASE

FLOOR PLAN  
SCALE 1/4" = 1'-0"



SHEET NUMBER

1064ES-B-BASE-REV



**BASEMENT / FOUNDATION PLAN**  
 SCALE 1/4" = 1'-0"

- FOUNDATION PLAN NOTES:**
- SURFACE FINISHED WITH CRUSHED STONE AND POLY V.B.
  - FOUNDATION WALL 8" CONCRETE BLOCK W/ 2X8 SILL PLATE BOLTED W/ ANCHOR BOLTS @ 48" O.C.
  - FOOTING 18X8 POURED CONCRETE WITH (2) #4 REBAR.
  - CONCRETE SLABS 4" REINFORCED W/ 6X6 10/10 W.V.F. ON 6 MIL. POLY AND 4" CRUSHED STONE.
  - DOUBLE JOISTS UNDER PARALLEL PARTITIONS.
  - BLOCKING OR BRIDGING WITH JOISTS WHERE NEEDED.

**FOUNDATION PLAN NOTES:**

- SURFACE FINISHED WITH CRUSHED STONE AND POLY V.B.
- FOUNDATION WALL 8" CONCRETE BLOCK W/ 2X8 SILL PLATE BOLTED W/ ANCHOR BOLTS @ 48" O.C.
- FOOTING 18X8 POURED CONCRETE WITH (2) #4 REBAR.
- CONCRETE SLABS 4" REINFORCED W/ 6X6 10/10 W.V.F. ON 6 MIL. POLY AND 4" CRUSHED STONE.
- DOUBLE JOISTS UNDER PARALLEL PARTITIONS.
- BLOCKING OR BRIDGING WITH JOISTS WHERE NEEDED.

- SURFACE FINISHED WITH CRUSHED STONE AND POLY V.B.
- FOUNDATION WALL 8" CONCRETE BLOCK W/ 2X8 SILL PLATE BOLTED W/ ANCHOR BOLTS @ 48" O.C.
- FOOTING 18X8 POURED CONCRETE WITH (2) #4 REBAR.
- CONCRETE SLABS 4" REINFORCED W/ 6X6 10/10 W.V.F. ON 6 MIL. POLY AND 4" CRUSHED STONE.
- DOUBLE JOISTS UNDER PARALLEL PARTITIONS.
- BLOCKING OR BRIDGING WITH JOISTS WHERE NEEDED.

- SURFACE FINISHED WITH CRUSHED STONE AND POLY V.B.
- FOUNDATION WALL 8" CONCRETE BLOCK W/ 2X8 SILL PLATE BOLTED W/ ANCHOR BOLTS @ 48" O.C.
- FOOTING 18X8 POURED CONCRETE WITH (2) #4 REBAR.
- CONCRETE SLABS 4" REINFORCED W/ 6X6 10/10 W.V.F. ON 6 MIL. POLY AND 4" CRUSHED STONE.
- DOUBLE JOISTS UNDER PARALLEL PARTITIONS.
- BLOCKING OR BRIDGING WITH JOISTS WHERE NEEDED.

- SURFACE FINISHED WITH CRUSHED STONE AND POLY V.B.
- FOUNDATION WALL 8" CONCRETE BLOCK W/ 2X8 SILL PLATE BOLTED W/ ANCHOR BOLTS @ 48" O.C.
- FOOTING 18X8 POURED CONCRETE WITH (2) #4 REBAR.
- CONCRETE SLABS 4" REINFORCED W/ 6X6 10/10 W.V.F. ON 6 MIL. POLY AND 4" CRUSHED STONE.
- DOUBLE JOISTS UNDER PARALLEL PARTITIONS.
- BLOCKING OR BRIDGING WITH JOISTS WHERE NEEDED.

- SURFACE FINISHED WITH CRUSHED STONE AND POLY V.B.
- FOUNDATION WALL 8" CONCRETE BLOCK W/ 2X8 SILL PLATE BOLTED W/ ANCHOR BOLTS @ 48" O.C.
- FOOTING 18X8 POURED CONCRETE WITH (2) #4 REBAR.
- CONCRETE SLABS 4" REINFORCED W/ 6X6 10/10 W.V.F. ON 6 MIL. POLY AND 4" CRUSHED STONE.
- DOUBLE JOISTS UNDER PARALLEL PARTITIONS.
- BLOCKING OR BRIDGING WITH JOISTS WHERE NEEDED.

- SURFACE FINISHED WITH CRUSHED STONE AND POLY V.B.
- FOUNDATION WALL 8" CONCRETE BLOCK W/ 2X8 SILL PLATE BOLTED W/ ANCHOR BOLTS @ 48" O.C.
- FOOTING 18X8 POURED CONCRETE WITH (2) #4 REBAR.
- CONCRETE SLABS 4" REINFORCED W/ 6X6 10/10 W.V.F. ON 6 MIL. POLY AND 4" CRUSHED STONE.
- DOUBLE JOISTS UNDER PARALLEL PARTITIONS.
- BLOCKING OR BRIDGING WITH JOISTS WHERE NEEDED.

- SURFACE FINISHED WITH CRUSHED STONE AND POLY V.B.
- FOUNDATION WALL 8" CONCRETE BLOCK W/ 2X8 SILL PLATE BOLTED W/ ANCHOR BOLTS @ 48" O.C.
- FOOTING 18X8 POURED CONCRETE WITH (2) #4 REBAR.
- CONCRETE SLABS 4" REINFORCED W/ 6X6 10/10 W.V.F. ON 6 MIL. POLY AND 4" CRUSHED STONE.
- DOUBLE JOISTS UNDER PARALLEL PARTITIONS.
- BLOCKING OR BRIDGING WITH JOISTS WHERE NEEDED.

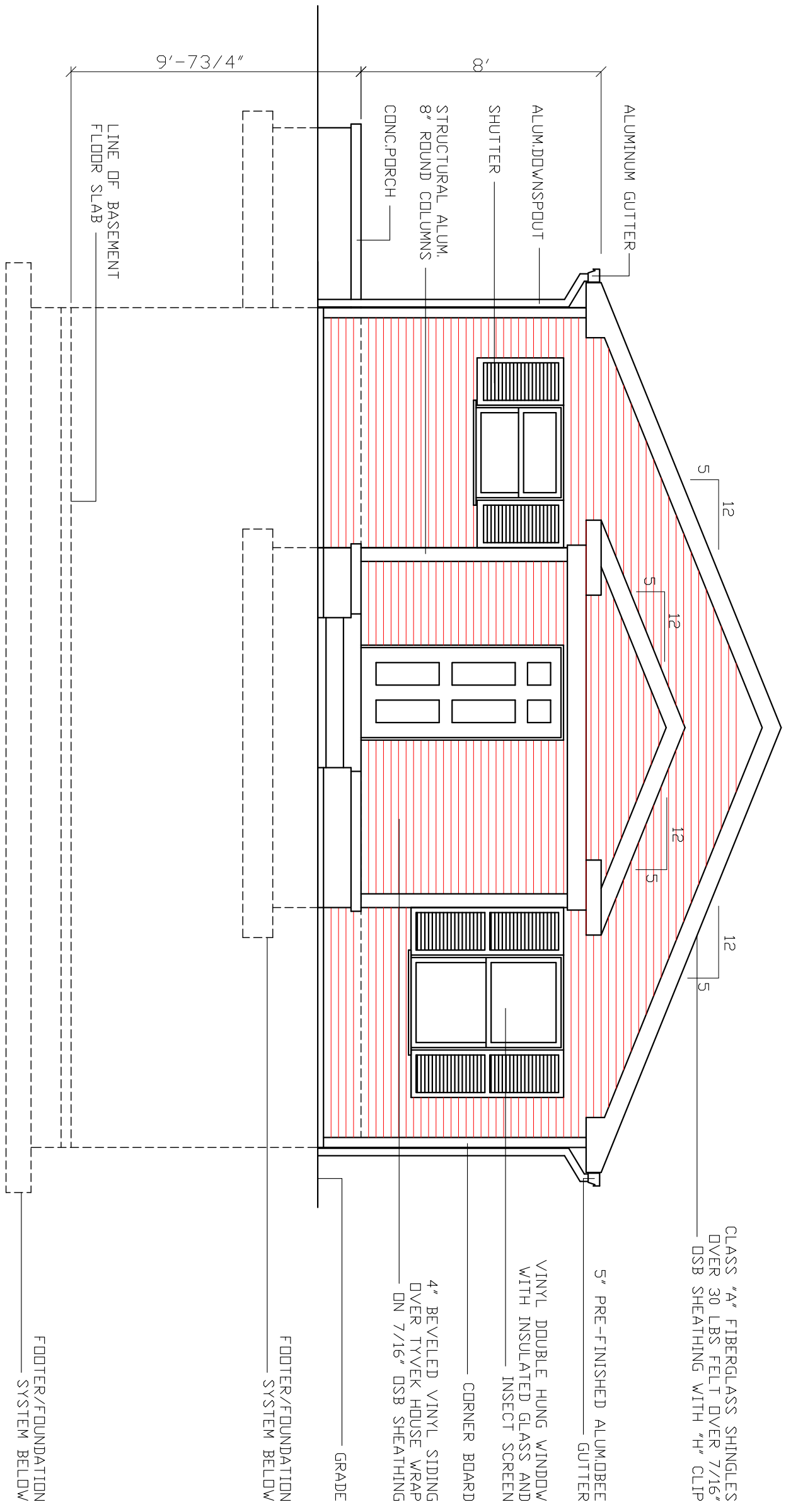
**KRISS LOWRY & ASSOCIATES, INC.**  
 CORINTH, KY      1064ES-B-BASE-REV

	<b>RANDALL C. BURCHETT &amp; ASSOCIATES</b> <b>ARCHITECT</b> 322 WEST COURT ST. PRESTONSBURG, KENTUCKY 41653 PH. 606.886.3929 FAX. 606.886.0289
DATE: 12.17.10 REVISED: REVISED: DRAWN BY: RCB JOB NO: 1064ES-B-BASE	

DATE:	12.17.10
REVISED:	
REVISIONS:	
REVISIONS:	
DRAWN BY:	RCB
JOB NO.:	1064ES-B-BASE

RANDALL C. BURCHETT & ASSOCIATES  
**ARCHITECT**  
 322 WEST COURT ST. PRESTONSBURG, KENTUCKY 41653  
 PH. 606.886.3929 FAX. 606.886.0289

KRISS LOWRY & ASSOCIATES, INC.  
 CORINTH, KY  
 1064ES-B-BASE-REV



FRONT ELEVATION

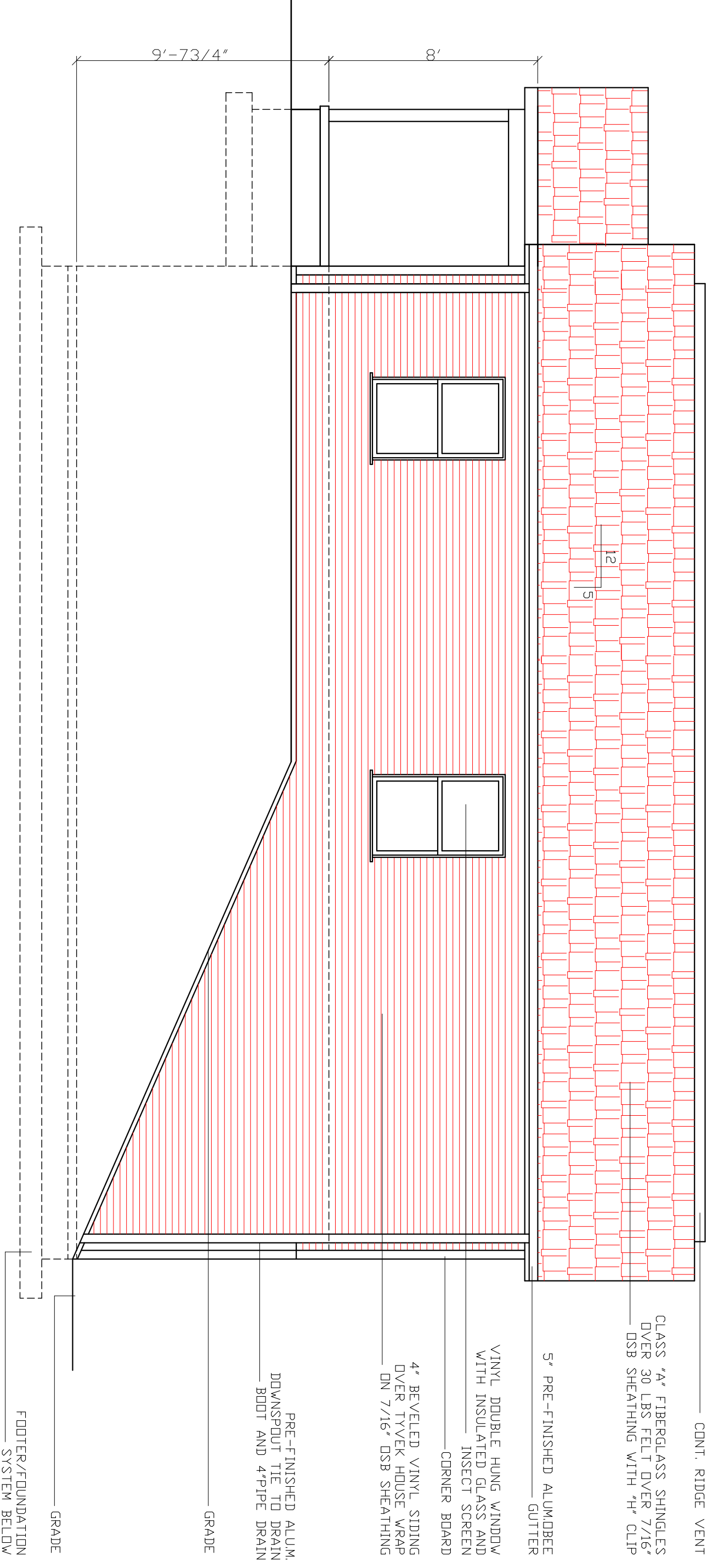
SCALE 1/4" = 1'-0"

SHEET NUMBER

DATE: 12.17.10  
 REVISED:  
 REVISED:  
 REVISED:  
 DRAWN BY: RCB  
 JOB NO: 1064ES-B-BASE

RANDALL C. BURCHETT & ASSOCIATES  
**ARCHITECT**  
 322 WEST COURT ST. PRESTONSBURG, KENTUCKY 41653  
 PH. 606.886.3929 FAX. 606.886.0289

KRISS LOWRY & ASSOCIATES, INC.  
 CORINTH, KY 1064ES-B-BASE-REV



CONT. RIDGE VENT

CLASS "A" FIBERGLASS SHINGLES  
 OVER 30 LBS FELT OVER 7/16"  
 OSB SHEATHING WITH "H" CLIP

5" PRE-FINISHED ALUMBEEB  
 GUTTER

VINYL DOUBLE HUNG WINDOW  
 WITH INSULATED GLASS AND  
 INSECT SCREEN  
 CORNER BOARD

4" BEVELED VINYL SIDING  
 OVER TYVEK HOUSE WRAP  
 ON 7/16" OSB SHEATHING

PRE-FINISHED ALUM.  
 DOWNSPOUT TIE TO DRAIN  
 BOOT AND 4"PIPE DRAIN

GRADE

GRADE

FOOTER/FOUNDATION  
 SYSTEM BELOW

12  
5

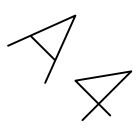
8'

9'-7 3/4"

**LEFT SIDE ELEVATION**

SCALE 1/4" = 1'-0"

SHEET NUMBER



CLASS "A" FIBERGLASS SHINGLES  
OVER 30 LBS FELT OVER 7/16"  
OSB SHEATHING WITH "H" CLIP

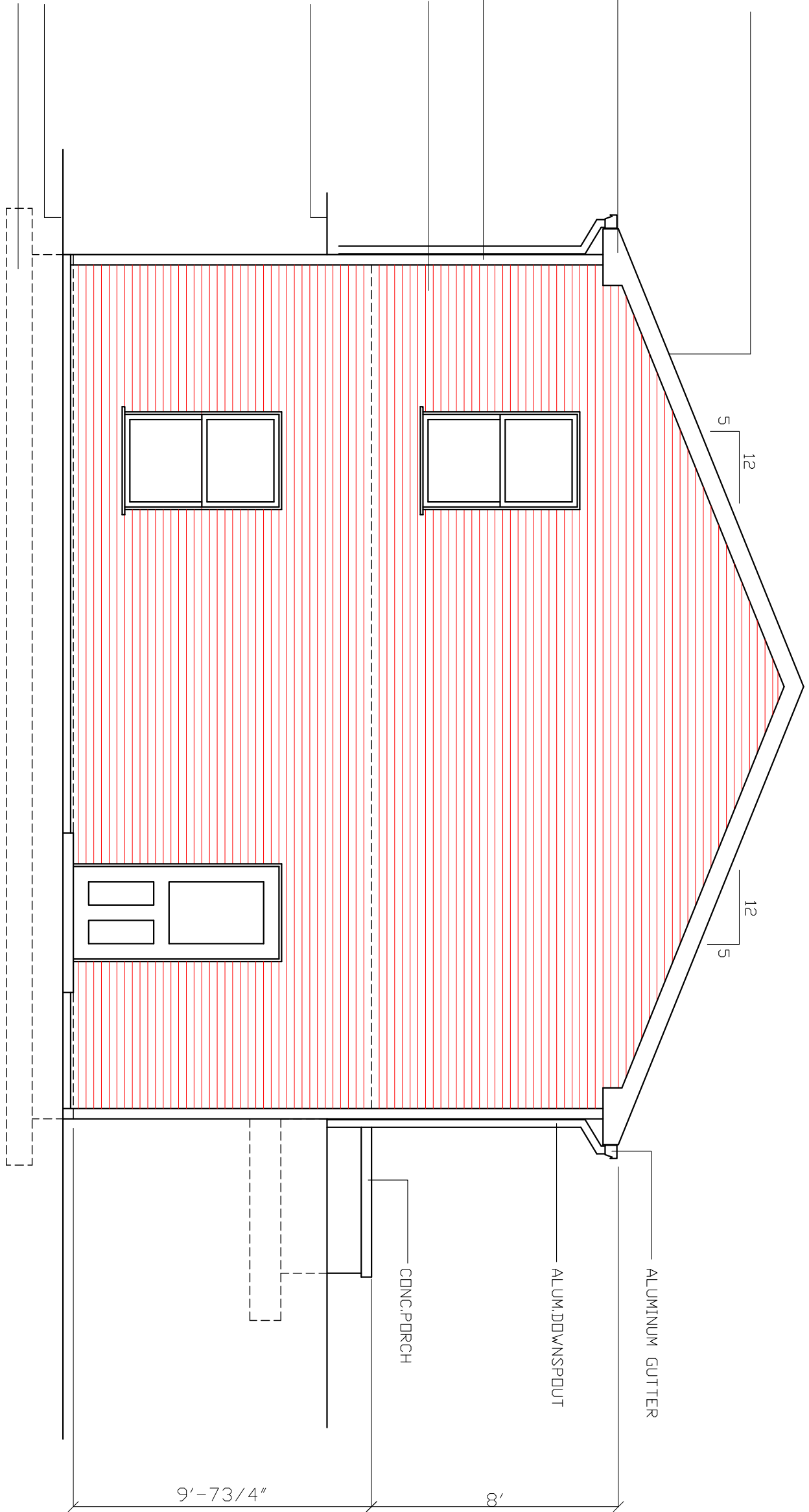
5" PRE-FINISHED ALUMBEES  
GUTTER

4" BEVELED VINYL SIDING  
OVER TYVEK HOUSE WRAP  
ON 7/16" OSB SHEATHING

CORNER BOARD

GRADE

GRADE  
FOOTER/FOUNDATION  
SYSTEM BELDW



5 | 12

12 | 5

ALUMINUM GUTTER

ALUM. DOWNSPOUT

CONC. PORCH

9'-7 3/4"

8'

REAR ELEVATION

SCALE 1/4" = 1'-0"

DATE:	12.17.10
REVISED:	
REVISIONS:	
DRAWN BY:	RCB
JOB NO.:	1064ES-B-BASE



RANDALL C. BURCHETT & ASSOCIATES  
**ARCHITECT**  
322 WEST COURT ST. PRESTONSBURG, KENTUCKY 41653  
PH. 606.886.3929 FAX. 606.886.0289

KRISS LOWRY & ASSOCIATES, INC.  
CORINTH, KY

1064ES-B-BASE-REV

SHEET NUMBER

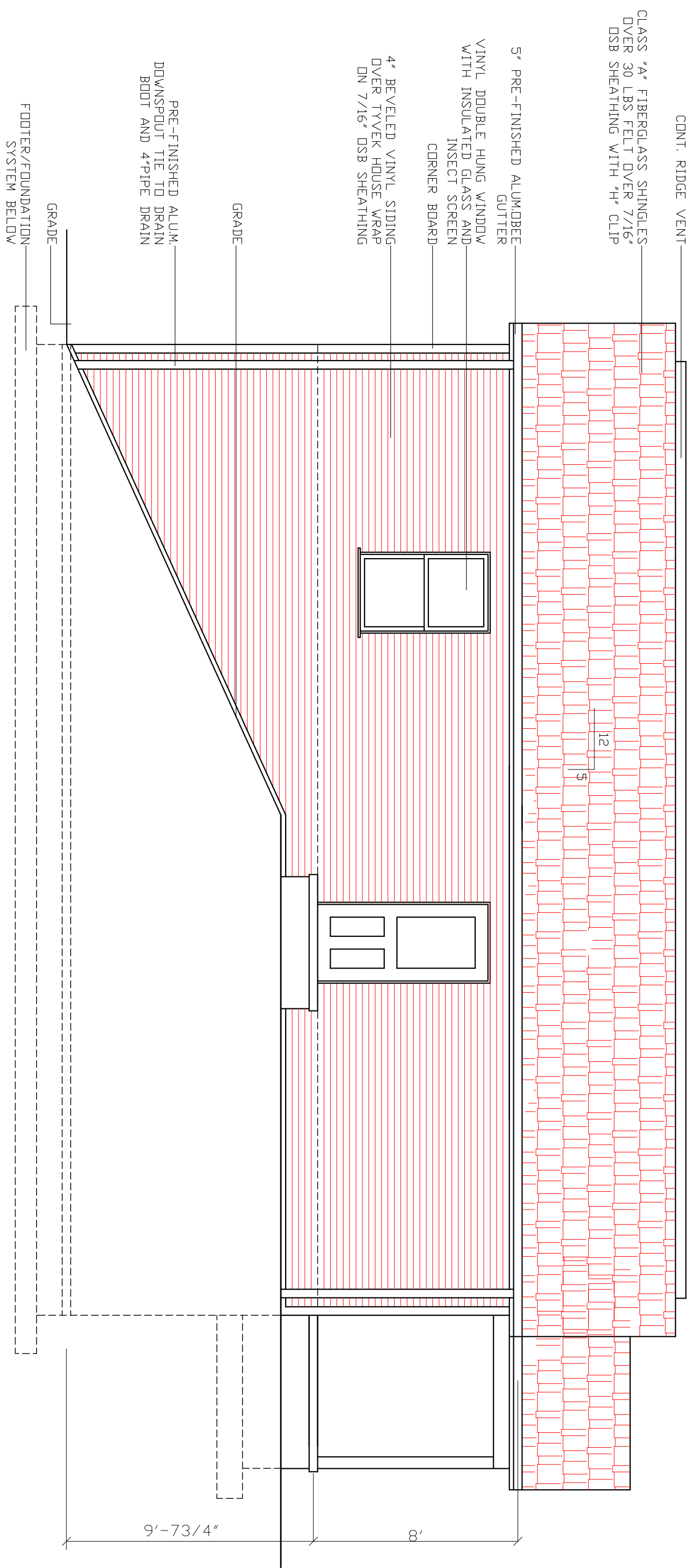
A5

DATE: 12.17.10  
 REVISED:  
 REVISED:  
 REVISED:  
 DRAWN BY: RCB  
 JOB NO: 1064ES-B-BASE

RANDALL C. BURCHETT & ASSOCIATES  
 ARCHITECT  
 322 WEST COURT ST. PRESTONSBURG, KENTUCKY 41653  
 PH. 606.886.3929 FAX. 606.886.0289

KRISS LOWRY & ASSOCIATES, INC.  
 CORINTH, KY 1064ES-B-BASE-REV

AG  
 SHEET NUMBER



RIGHT SIDE ELEVATION

SCALE 1/4" = 1'-0"

9'-73/4" 8'

PRE-ENGINEERED WOOD ENERGY HEEL  
TRUSSES W/12" HEEL AT 24" ON  
CENTER AR AS NOTED BY TRUSS  
MANUFACTURERS INSTALLATION  
DWGS. BLOCKING AS REQUIRED

CLASS "A" FIBERGLASS SHINGLES  
OVER 30#FELTS OVER 7/16" OSB  
SHEATHING WITH "H" CLIPS

CONTINUOUS ALUMINUM DRIP EDGE

5" PRE-FINISHED ALUMINUM GUTTER

R-42 BLOWN INSULATION

5/8" GYPSUM BOARD OVER POLY  
VAPOR BARRIER

1/2" GYPSUM BOARD OVER TYVEK OVER  
2X6 WOOD STUDS AT 24" C/C SPF

2-2X10 HEADER  
WOOD STOOL

WOOD CASEMENT SEAL PERIMETER  
R-19 FACED FIBERGLASS BATT INSULATION  
BETWEEN STUDS. FILL VOIDS

3/4" ADVANTECH SUBFLOORING-  
GLUE AND NAIL

TREATED 2X6 SILL PLATE OVER FOAM WILL  
SEALER STRIP

1/2" DIA. X 12" LONG ANCHOR BOLT  
AT 48" C/C

VINYL "S" CHANNEL  
VINYL DOUBLE HUNG WINDOW WITH  
INSULATED GLASS AND INSECT SCREEN  
SEE SHEET A-2

VINYL UTILITY TRIM  
CONTINUOUS SEALANT AROUND ALL  
WINDOW TRIM

4" BEVELED VINYL SIDING OVER TYVEK  
HOUSE WRAP ON 7/16" OSB SHEATHING

2X10 BAND JOIST

2X10 FLOOR JOISTS AT 16" C/C  
CONCRETE FOUNDATION WALL

R-13 THERMAL RIGID INSULATION

BITUMINOUS DAMP PROOFING BELOW GRADE

#4 REBAR AT 2' C/C  
#4 HORIZ.REBAR AT 12" C/C

R-13 THERMAL RIGID INSULATION  
4" CONC. SLAB WITH 6X6 8/8 W.W.M.  
3/8" EXPANSION JOINT  
R-10 RIGID INSULATION  
UNDER SLAB-EXTEND INWARD 6'  
4" DRAIN PIPE WITH  
FABRIC SOCK IN GRAVEL BED

CONT. CONCRETE FOOTING REINFORCED WITH (2)  
#4 BARS CONT. AND #4 REBAR PERPENDICULAR  
@ 4' C/C-SEE FOUNDATION PLAN SHEET A-3

4" LAYER OF #9 GRAVEL OR EQUAL,  
6 MILL VAPOR BARRIER OVER GRAVEL

KENTUCKY RESIDENTIAL CODE NOTES:

1. R-310 EMERGENCY EGRESS- EVERY SLEEPING ROOM SHALL HAVE AT LEAST ONE OPERABLE WINDOW OR EXTERIOR DOOR APPROVED FOR EMERGENCY EGRESS OR RESCUR. OPEN WINDOW MUST BE 5.7 SQ. FT. OR GREATER.

2. R-317 SMOKE DETECTORS- SHALL BE INSTALLED IN EACH BEDROOM, BATH AND IN EACH LEVEL OF ACTIVATION AREAS AND IN EACH LEVEL OF ACTIVATION AREAS DETECTORS SHALL BE INTERCONNECTED SUCH THAT THE ACTIVATION OF WILL ACTIVATE ALL ALARMS.

3. R-309.2 GARAGE SEPARATION- THE GARAGE SHALL BE COMPLETELY SEPARATED FROM THE RESIDENCE AND ITS ATTIC BY MEANS OF 1/2" DRYWALL APPLIED TO THE GARAGE SIDE. PENNINGS BETWEEN THE RESIDENCE SHALL BE EQUIPPED WITH EITHER A SOLID WOOD DOOR NO LESS THAN 1-3/8" THICK OR A 20 MINUTE FIRE RATED DOOR ASSEMBLY OR EQUIVALENT.

4. R-314 STAIRWAYS/HANDRAILS--STAIRS MAX. RISE 7" MIN. TREATD 11" HEAD CLEARANCE 6'-8" HANDRAILS 30" TO 38" HEIGHT MEASURED PLUMB UP\* FROM THE NOSING TO THE TOP OF RAILING SPINDLE SPACING MAY 4" IN BETWEEN GUARDRAILS 36" MIN. HEIGHT ON LEVEL SURFACES, 34" MIN. PLUMB UP\* FROM NOSING ON STAIRS.

5. R-303.3 BATHROOM VENTILATION--BATHROOMS WATER CLOSET COMPARTMENT AND OTHER SIMILAR ROOMS SHALL BE PROVIDED WITH AGGREGATE GLAZING AREAS OF NOT LESS THAN 1/2 AIR CHANGES PER MINUTE, AND IN WINDOW VENTS DIRECTLY TO THE OUTSIDE, INSTALL MECH. VENT IN BATH THROUGH ROOF.

6. R-312 LANDINGS- A MIN. 5X5' LANDING SHALL BE REQUIRED ON EACH SIDE OF AN EGRESS DOOR. LANDINGS AT THE EXTERIOR SIDE OF AN EXTERIOR SIDE OF AN EXTERIOR DOOR SHALL BE MORE THAN 1-1/2" BELOW THE TOP OF THE THRESHOLD.

7. R-308 GLAZING-WHEN USED IN THE FOLLOWING, GLAZING SHALL BE TEMPERED LAMINATED OR OTHERWISE APPROVED (1) IN ALL DOORS (2) IN ALL TUB ENCLOSURES INCLUDING WINDOWS IN THE TUB AREA (3) IN ALL PANELS OF WINDOWS EXCEEDING 9 SQ.FT. WHEN WITHIN 18" OF THE FLOOR.

CONSULT 2007 KENTUCKY RESIDENTIAL CODE FOR DETAILS

TYPICAL WALL SECTION

SCALE 1/2" = 1'-0"

DATE: 12.17.10  
REVISED: 12.20.10  
REVISED:  
DRAWN BY: RCB  
JOB: BASE-WALL

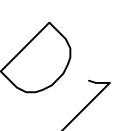


RANDALL C. BURCHETT & ASSOCIATES  
ARCHITECT  
255 WEST COURT STREET PRESTONSBURG, KENTUCKY 41653  
PH. 606.856.3929 FAX. 606.856.0289

BASEMENT-WALL

KRISS LOWRY & ASSOCIATES, INC.  
CORINTH, KY

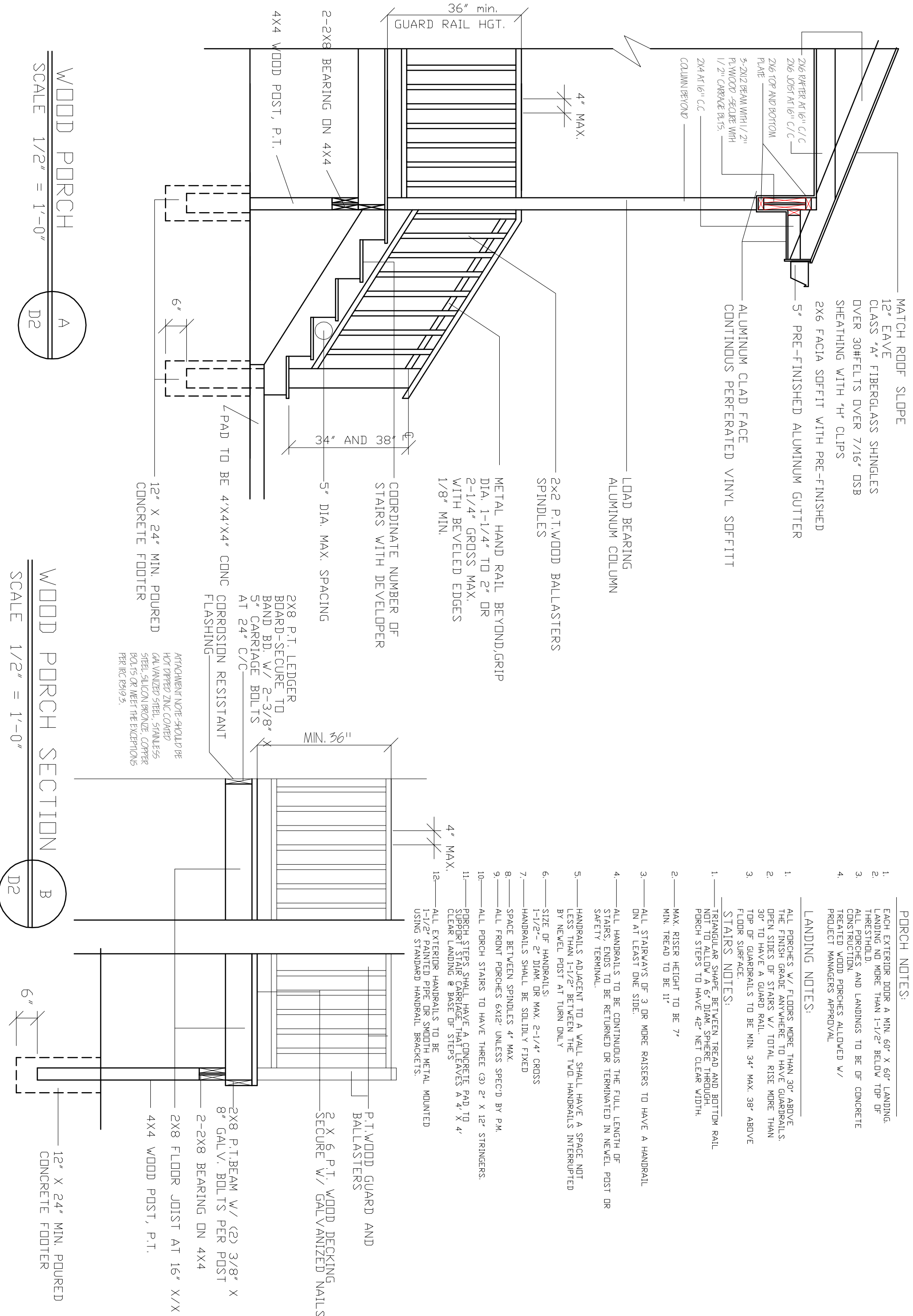
SHEET NUMBER



ALL WINDOWS ARE TO BE VINYL DOUBLE PANE LOW-E WITH A U-FACTOR DR .30 OR LESS AND A SHGC OF .30 OR LESS.

EXTERIOR DOORS SHALL HAVE A U-FACTOR OF 0.16 OR LESS.





WOOD PORCH  
SCALE 1/2" = 1'-0"

WOOD PORCH SECTION  
SCALE 1/2" = 1'-0"

MATCH ROOF SLOPE  
12" EAVE  
CLASS "A" FIBERGLASS SHINGLES  
OVER 30# FELTS OVER 7/16" OSB  
SHEATHING WITH "H" CLIPS  
2X6 FACIA SOFFIT WITH PRE-FINISHED  
5" PRE-FINISHED ALUMINUM GUTTER  
ALUMINUM CLAD FACE  
CONTINUOUS PERFORATED VINYL SOFFIT

2X4 AT 16" C/C  
2X6 JOIST AT 16" C/C  
2X6 TOP AND BOTTOM  
PLATE  
5-2X12 BEAM WITH 1/2" PLYWOOD - SECURE WITH 1/2" CARRIAGE BOLTS.  
COLUMN BEYOND  
4" MAX.  
36" min. GUARD RAIL HGT.  
2X2 P.T. WOOD BALLASTERS  
SPINDLES  
LOAD BEARING ALUMINUM COLUMN  
METAL HAND RAIL BEYOND GRIP  
DIA. 1-1/4" TO 2" OR 2-1/4" GROSS MAX. WITH BEVELED EDGES 1/8" MIN.  
COORDINATE NUMBER OF STAIRS WITH DEVELOPER  
5" DIA. MAX. SPACING  
2X8 P.T. LEDGER BOARD - SECURE TO BAND BD. W/ 2-3/8" X 5" CARRIAGE BOLTS AT 24" C/C  
CONC CORROSION RESISTANT FLASHING  
12" X 24" MIN. POURED CONCRETE FOOTER

ATTACHMENT NOTE - SHOULD BE HOT DIPPED ZINC COATED GALVANIZED STEEL, STAINLESS STEEL, SILICON BRONZE, COPPER BOLTS OR MEET THE EXCEPTIONS PER IRC R319.5.

PORCH NOTES:

1. EACH EXTERIOR DOOR A MIN. 60" X 60" LANDING NO MORE THAN 1-1/2" BELOW TOP OF THRESHOLD.
2. ALL PORCHES AND LANDINGS TO BE OF CONCRETE CONSTRUCTION.
3. TREATED WOOD PORCHES ALLOWED W/ PROJECT MANAGERS APPROVAL
- 4.

LANDING NOTES:

1. ALL PORCHES W/ FLOORS MORE THAN 30" ABOVE THE FINISH GRADE ANYWHERE TO HAVE GUARDRAILS. OPEN SIDES OF STAIRS W/ TOTAL RISE MORE THAN 30" TO HAVE A GUARD RAIL.
2. TOP OF GUARDRAILS TO BE MIN. 34" MAX. 38" ABOVE FLOOR SURFACE.
3. STAIRS NOTES:
- 4.

1. TRIANGULAR SHAPE BETWEEN TREAD AND BOTTOM RAIL NOT TO ALLOW A 6" DIAM. SPHERE THROUGH. PORCH STEPS TO HAVE 42" NET CLEAR WIDTH.
2. MAX. RISER HEIGHT TO BE 7" MIN. TREAD TO BE 11"
3. ALL STAIRWAYS OF 3 OR MORE RAISERS TO HAVE A HANDRAIL ON AT LEAST ONE SIDE.
4. ALL HANDRAILS TO BE CONTINUOUS THE FULL LENGTH OF STAIRS. ENDS TO BE RETURNED OR TERMINATED IN NEVEL POST OR SAFETY TERMINAL.
5. HANDRAILS ADJACENT TO A WALL SHALL HAVE A SPACE NOT LESS THAN 1-1/2" BETWEEN THE TWO HANDRAILS INTERRUPTED BY NEVEL POST AT TURN ONLY
6. SIZE OF HANDRAILS: 1-1/2" - 2" DIAM. OR MAX. 2-1/4" CROSS
7. HANDRAILS SHALL BE SOLIDLY FIXED
8. SPACE BETWEEN SPINDLES 4" MAX.
9. ALL FRONT PORCHES 6X12' UNLESS SPEC'D BY P.M.
10. ALL PORCH STAIRS TO HAVE THREE (3) 2" X 12" STRINGERS.
11. PORCH STEPS SHALL HAVE A CONCRETE PAD TO SUPPORT STAIR CARRIAGE THAT LEAVES A 4" X 4" CLEAR LANDING @ BASE OF STEPS
12. ALL EXTERIOR HANDRAILS TO BE 1-1/2" PAINTED PIPE OR SMOOTH METAL MOUNTED USING STANDARD HANDRAIL BRACKETS.

4" MAX.  
MIN. 36"

P.T. WOOD GUARD AND BALLASTERS  
2 X 6 P.T. WOOD DECKING SECURE W/ GALVANIZED NAILS.  
2X8 P.T. BEAM W/ (2) 3/8" X 8" GALV. BOLTS PER POST  
2-2X8 BEARING ON 4X4  
2X8 FLOOR JOIST AT 16" X/X  
4X4 WOOD POST, P.T.  
12" X 24" MIN. POURED CONCRETE FOOTER

DATE: 12.02.10  
REVISED: 12.09.10  
REVISED:  
DRAWN BY: RCB  
JOB NO: ES-A



RANDALL C. BURCHETT & ASSOCIATES  
ARCHITECT  
233 WEST COURT STREET PRESTONSBURG, KENTUCKY 41653  
PH. 606.886.3929 FAX. 606.886.0289

KRISS LOWRY & ASSOCIATES, INC.  
CORINTH, KY

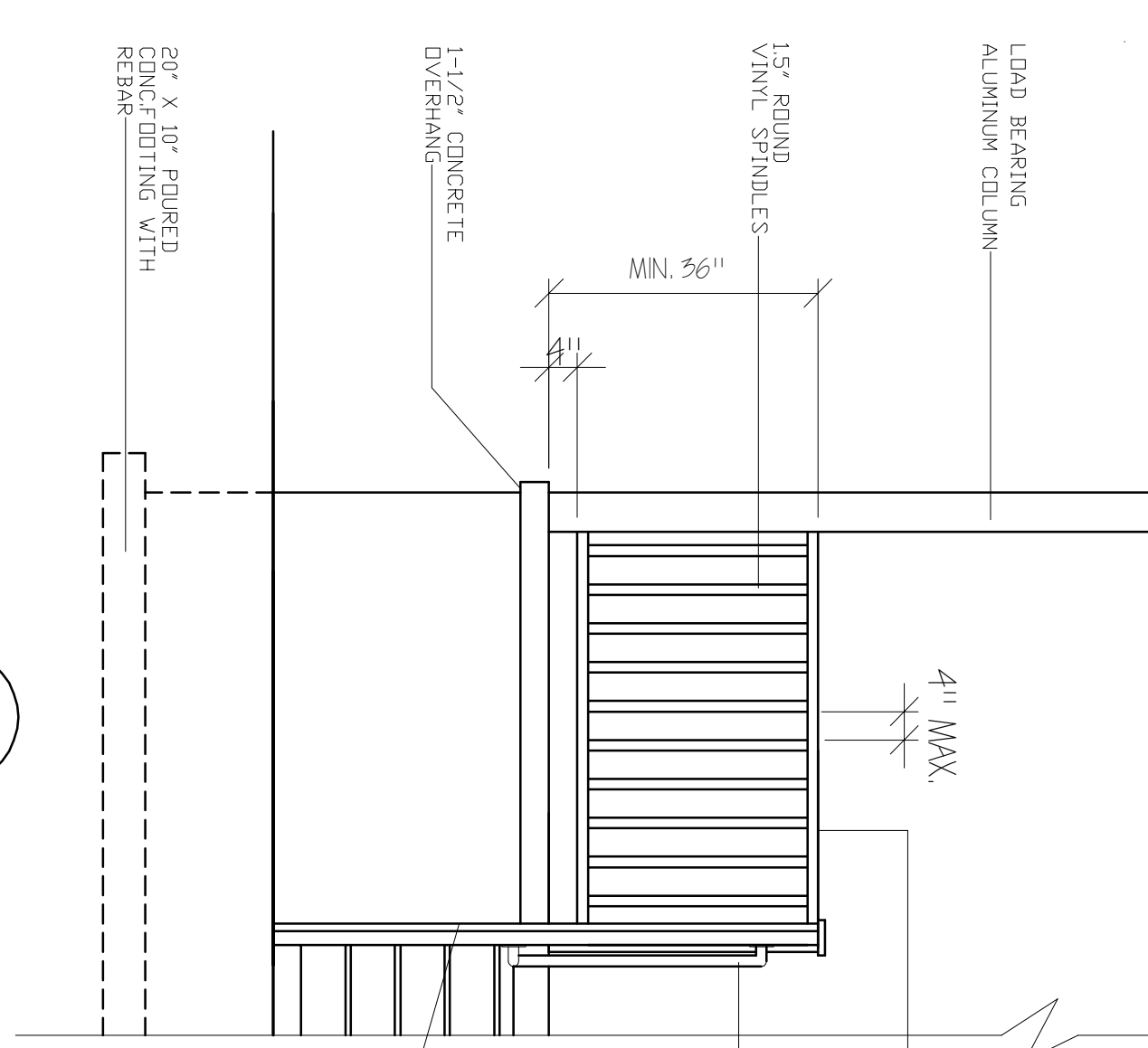
SHEET NUMBER  
CORINTH, KY

MATCH ROOF SLOPE

CLASS "A" FIBERGLASS SHINGLES  
OVER 30HELTS OVER 7/16" OSB  
SHEATHING WITH "H" CLIPS

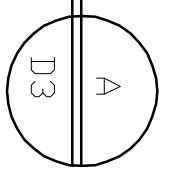
2X6 FACIA SOFFIT WITH PRE-FINISHED  
5" PRE-FINISHED ALUMINUM GUTTER  
CONTINUOUS PERFORATED VINYL SOFFITT  
12" EAVE  
ALUMINUM CLAD FACE

2X6 RAFTER AT 16" C/C  
2X6 JOIST AT 16" C/C  
2X6 TOP AND BOTTOM PLATE  
5-2X12 BEAM WITH 1/2" PLYWOOD - SECURE WITH 1/2" CARPAGE BLTS.  
2X4 AT 16" C/C

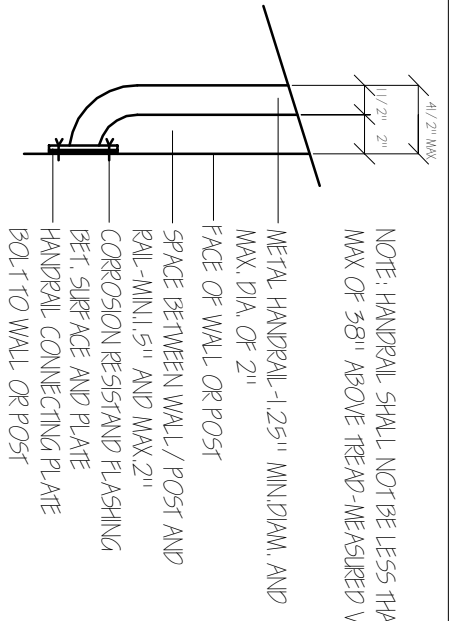


RAISED PORCH SLAB

SCALE 1/2" = 1'-0"



HANDRAIL CONNECTION DETAIL  
NT5.



NOTE: HANDRAIL SHALL NOT BE LESS THAN 34" AND  
MAX OF 38" ABOVE TREAD - MEASURED VERTICALLY

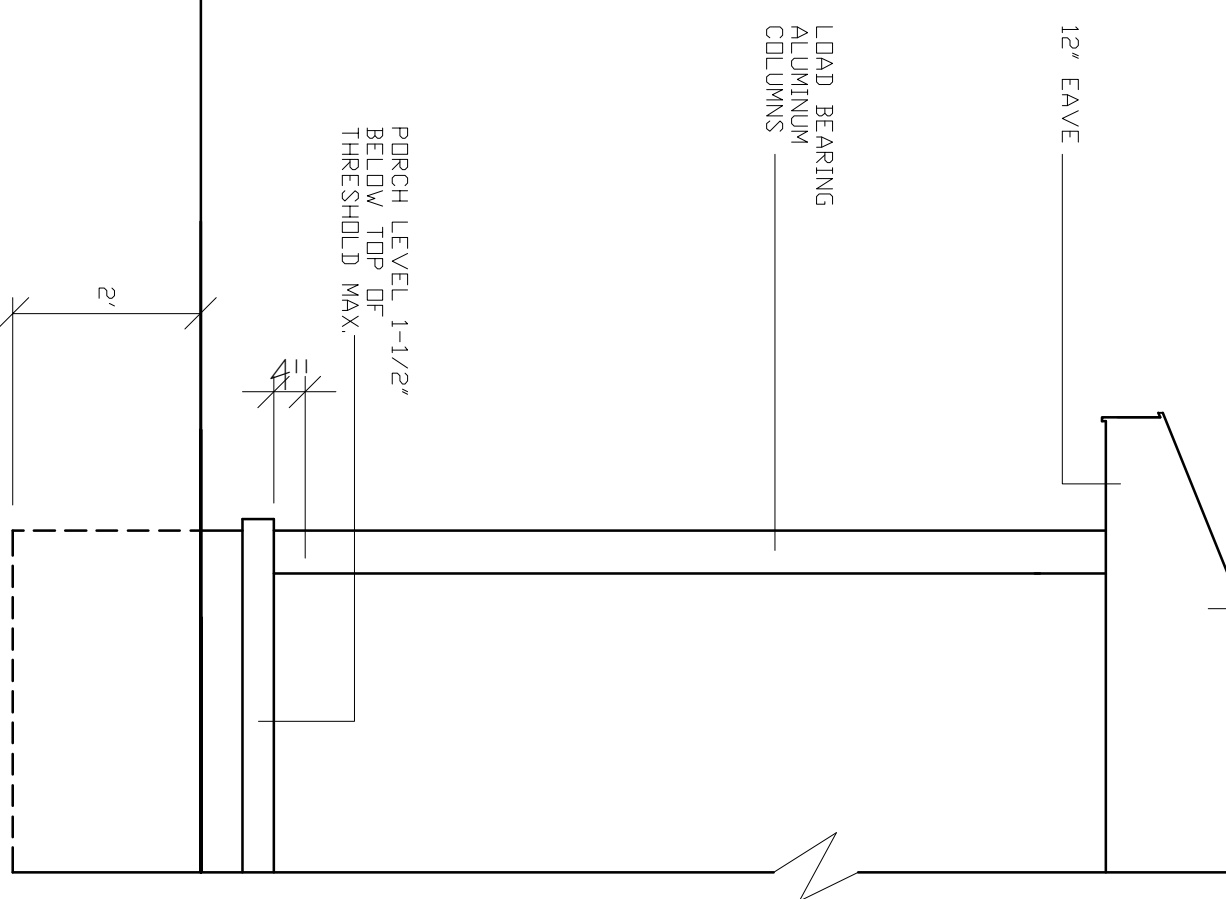
VINYL TOP RAIL GRIP SIZE  
DIA. 1-1/4" TO 2" OR  
2-1/4" GROSS MAX.  
WITH BEVELED EDGES  
1/8" MIN.

METAL HANDRAIL, MIN 34"  
MAX-38"  
SEE SHEET D-2

PORCH SLABS TO INCLUDE:  
4" MIN. THICKNESS  
6" WIRE MESH  
CRUSHED STONE GRADED 1/4" - 3/4"  
COVERED WITH VAPOR BARRIER  
EXP. JOINTS @ WALLS  
1-1/2" OVERHANDS  
1/8" / 12" SLOPE AWAY FROM HOUSE

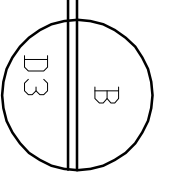
4X4 VINYL POST  
SET IN CONCRETE

MATCH ROOF SLOPE  
SEE DETAIL A/D3



@GRADE PORCH SLAB

SCALE 1/2" = 1'-0"



DATE: 11.11.11  
REVISED:  
REMOVED:  
REMOVED:  
DRAWN BY: RCB  
JOB NO: ES-A



RANDALL C. BURCHETT & ASSOCIATES  
ARCHITECT  
233 WEST COURT STREET, PRESTONSBURG, KENTUCKY 41653  
PH. 606.886.3929 FAX. 606.886.0289

KRISS LOWRY & ASSOCIATES  
CORINTH, KY

SHEET NUMBER

