

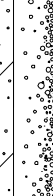




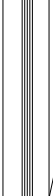







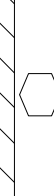




# SYMBOL LEGEND

MARK	DESCRIPTION
	EARTH
	GRAVEL
	CONCRETE (CONC.)
	CONCRETE BLOCK (C.M.U.)
	STEEL
	FINISHED WOOD
	ROUGH CUT WOOD
	WOOD BLOCKING
	WOOD STUDS
	BATT INSULATION
	RIGID INSULATION
	PLYWOOD
	DOOR DESIGNATION
	WINDOW DESIGNATION
	SITE ELEVATION DESIGNATION
	DETAIL REFERENCE
	COLUMN DESIGNATION
	BRICK

## PROJECT LOCATION MAP

### Project:

RESIDENTIAL UNIT NO.KL-144OES-REV

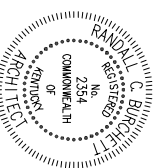
11.11.11

### DEVELOPER:

Kriss Lowry and Associates, Inc.  
 227 South Rays Fork Road  
 Corinth, Kentucky 41010-3027  
 Ph. (502)-857-2800

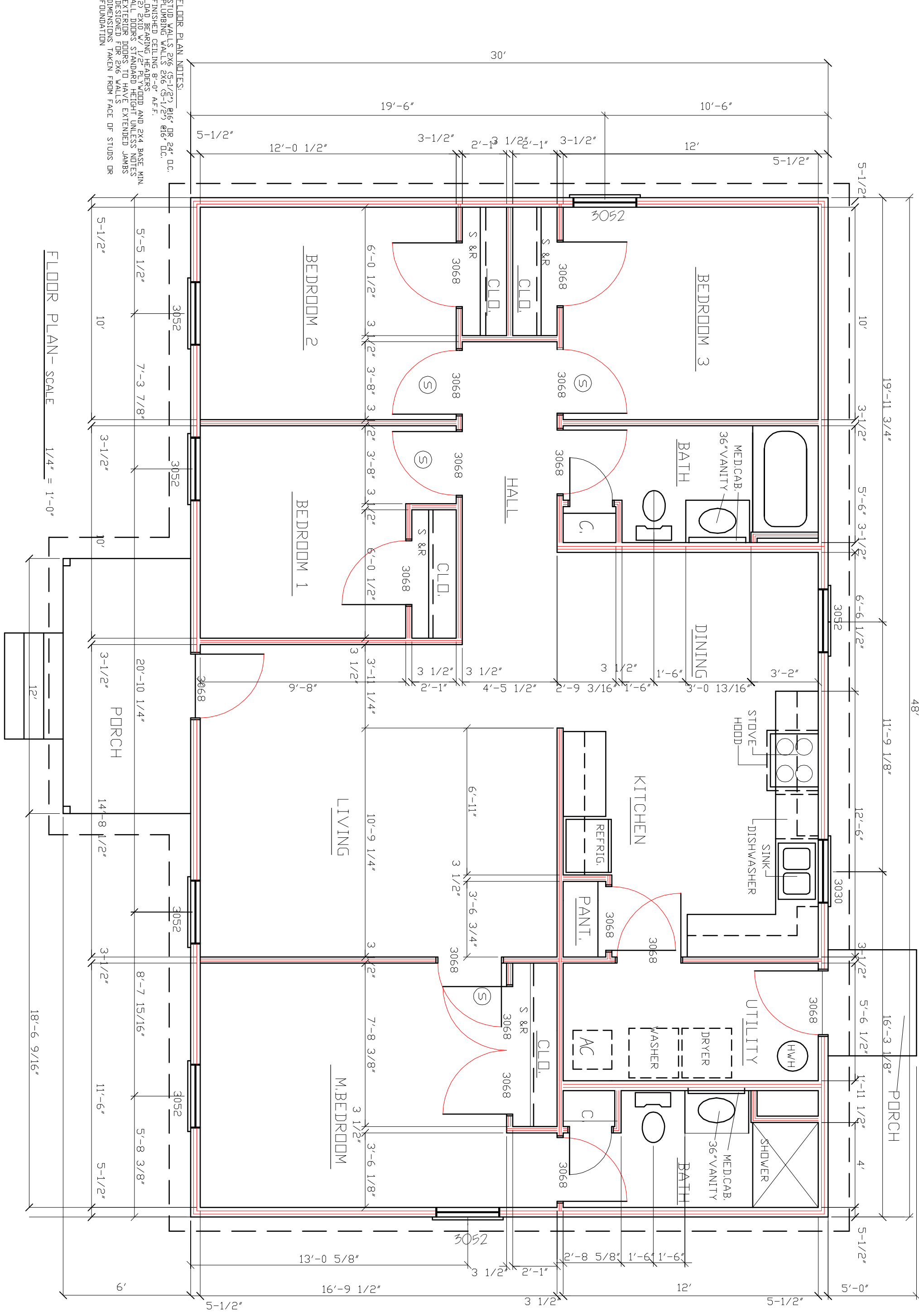
### ARCHITECT:

Randall C. Burchett  
 233 West Court Street, Suite 200  
 Prestonsburg, Ky. 41653  
 PH. 606/886-3929 FAX. 606/886-0289



### INDEX OF DRAWINGS

SHEET	DESCRIPTION
TL	TITLE SHEET/DATA
A-1	COMPOSIT FLOOR PLAN
A-2	FOUNDATION PLAN
A-3	ELEVATIONS
A-4	ELEVATIONS
A-5	ELEVATIONS
A-6	ELEVATIONS
A-7	BUILDING SECTION
D-1	TYPICAL WALL SECTION
	NOTES



FLOOR PLAN NOTES:  
 -STUD WALLS 2x6 (5-1/2") @16" OR 24" O.C.  
 -PLUMBING WALLS 2x6 (5-1/2") @16" O.C.  
 -FINISHED CEILING 8'-0" A.F.F.  
 -LOAD BEARING HEADERS (2) 2x10 W/ 1/2" PLYWOOD AND 2x4 BASE MIN. ALL DOORS STANDARD HEIGHT UNLESS NOTES -EXTERIOR DOORS TO HAVE EXTENDED JAMBS -DIMENSIONS TAKEN FROM FACE OF STUDS OR FOUNDATION

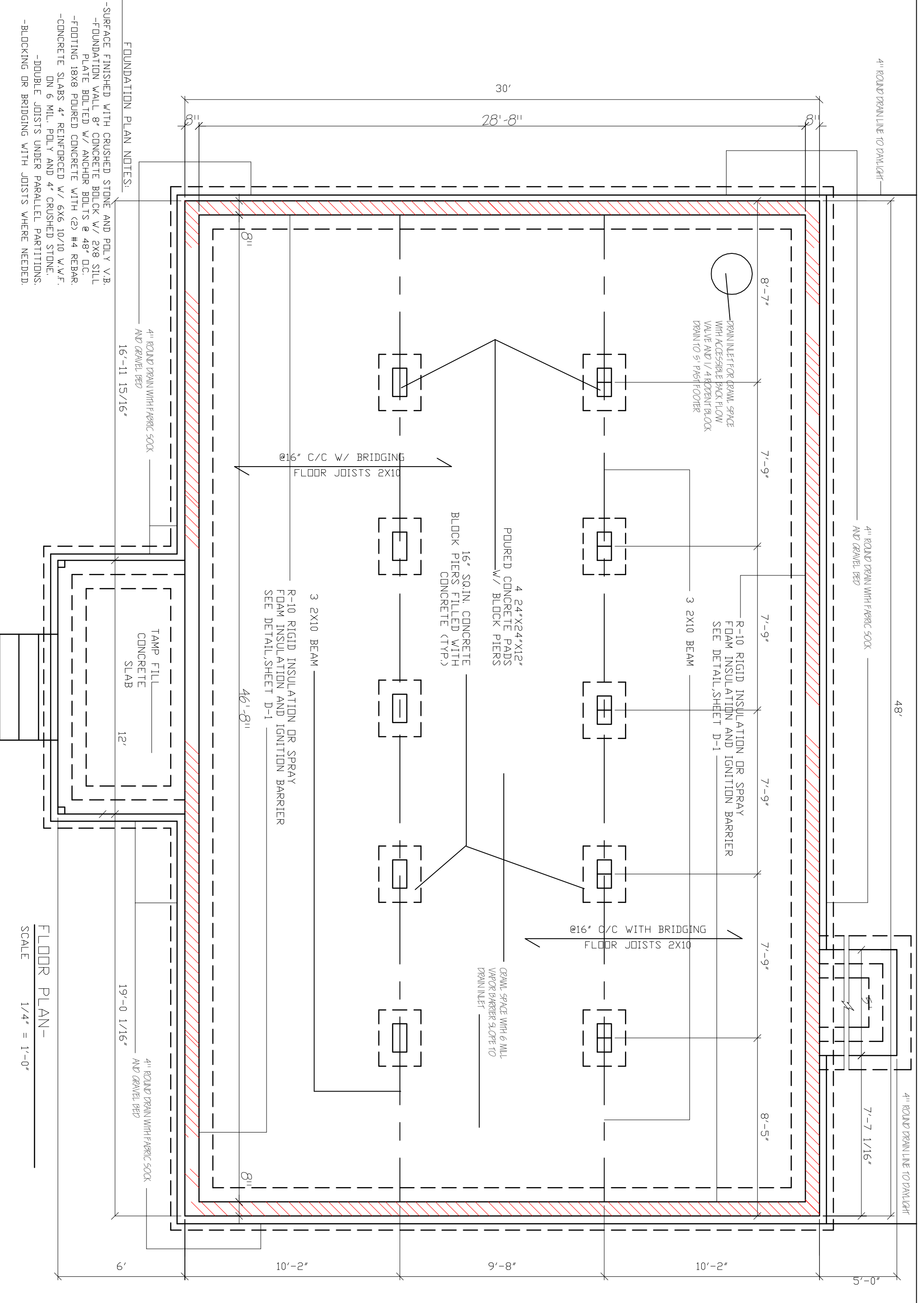
FLOOR PLAN - SCALE  
 1/4" = 1'-0"

DATE:	09-22-08
REVISED:	11.18.09
REVISED:	
DRAWN BY:	RCB
JOB NO:	KI 1440es-rev

RANDALL C. BURCHETT & ASSOCIATES  
 ARCHITECT  
 322 WEST COURT ST. PRESTONSBURG, KENTUCKY 41653  
 PH. 606.886.3929 FAX. 606.886.0289

KRISS LOWRY & ASSOCIATES, INC.  
 CORINTH, KY  
 KI 1440es-rev

A



- FOUNDATION PLAN NOTES:
- SURFACE FINISHED WITH CRUSHED STONE AND POLY V.B.
  - FOUNDATION WALL 8" CONCRETE BLOCK W/ 2X8 SILL PLATE BOLTED W/ ANCHOR BOLTS @ 48" O.C.
  - FOOTING 18X8 POURED CONCRETE WITH (2) #4 REBAR.
  - CONCRETE SLABS 4" REINFORCED W/ 6X6 10/10 W.W.F. ON 6 MIL. POLY AND 4" CRUSHED STONE.
  - DOUBLE JOISTS UNDER PARALLEL PARTITIONS.
  - BLOCKING OR BRIDGING WITH JOISTS WHERE NEEDED.

FLOOR PLAN -  
SCALE 1/4" = 1'-0"

SHEET NUMBER  
A2

KRISS LOWRY & ASSOCIATES  
CORINTH, KY

KI1440es-rev



RANDALL C. BURCHETT & ASSOCIATES  
ARCHITECT  
322 WEST COURT ST. PRESTONSBURG, KENTUCKY 41653  
PH. 606.886.3929 FAX. 606.886.0289

DATE:	11.08.11
REVISED:	
REVISOR:	
REVISION:	
DRAWN BY:	RCB
JOB:	KI 1440es-rev

DATE: 11.08.11  
 REVISED:  
 REVISED:  
 REVISED:  
 DRAWN BY: RCB  
 Job K1 1440es-rev

RANDALL C. BURCHETT & ASSOCIATES  
 ARCHITECT  
 322 WEST COURT ST. PRESTONSBURG, KENTUCKY 41653  
 PH. 606.886.3929 FAX. 606.886.0289

K1 1440es-rev

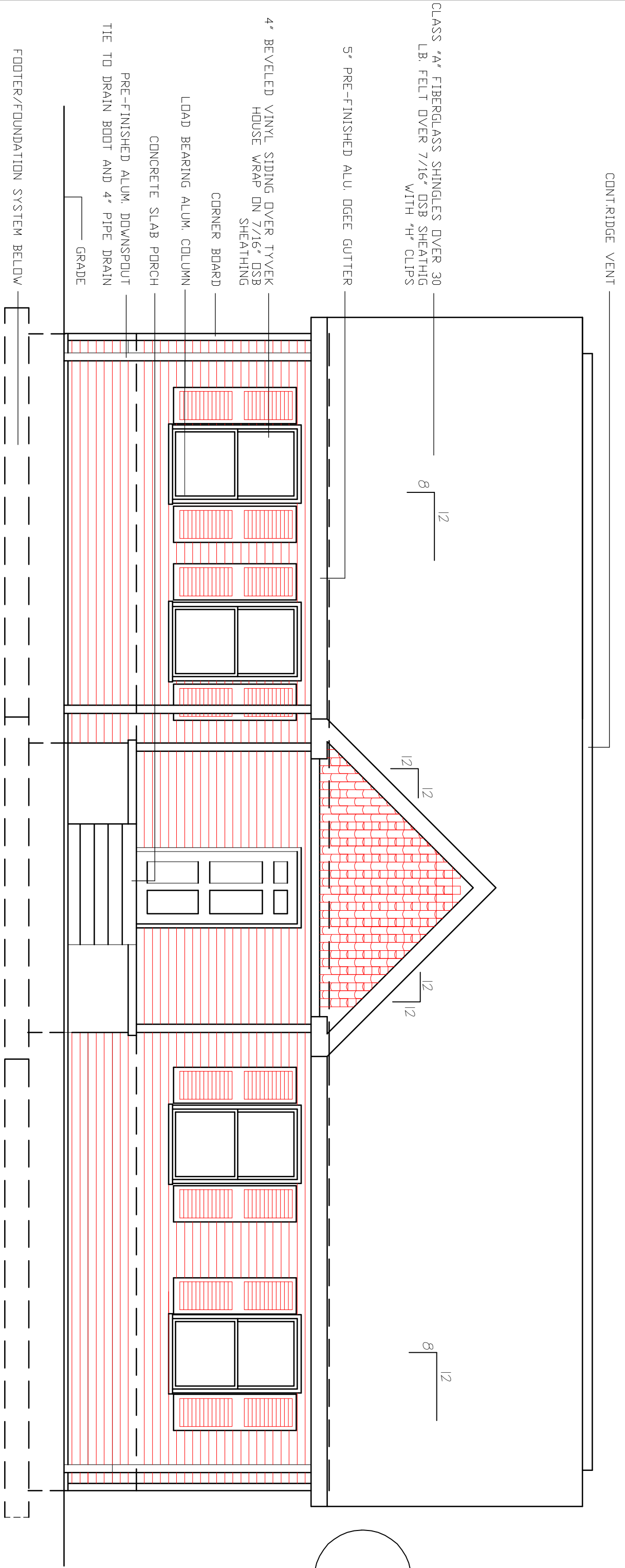
KRISS LOWRY & ASSOCIATES, INC.  
 CORINTH, KY

SHEET NUMBER

3A

FRONT ELEVATION

SCALE 1/4" = 1'-0"



CONTRIDGE VENT

8 12

12 12

12 12

8 12

FOOTER/FOUNDATION SYSTEM BELOW

4" BEVELED VINYL SIDING OVER TYVEK HOUSE WRAP ON 7/16" OSB SHEATHING  
 CORNER BOARD  
 LOAD BEARING ALUM. COLUMN  
 CONCRETE SLAB PORCH  
 PRE-FINISHED ALUM. DOWNSPOUT  
 TIE TO DRAIN BOOT AND 4" PIPE DRAIN  
 GRADE

5" PRE-FINISHED ALU. DGEET GUTTER

DATE: 08/29/08

REVISED:

REVISED:

REVISED:

DRAWN BY: RCB

JOB NO: 440es-rev



RANDALL C. BURCHETT & ASSOCIATES  
ARCHITECT  
322 WEST COURT ST. PRESTONSBURG, KENTUCKY 41653  
PH. 606.886.3929 FAX. 606.886.0289

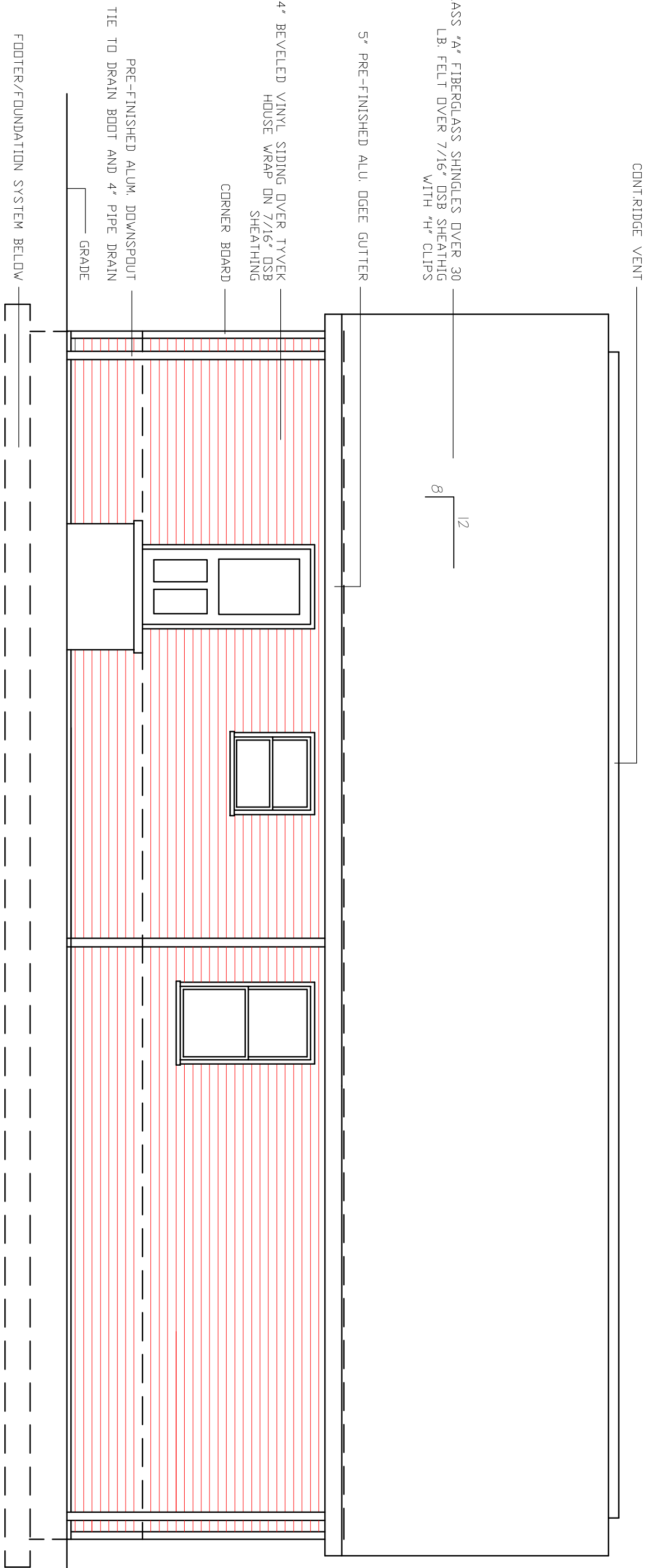
kl 1440es-rev

KRISS LOWRY & ASSOCIATES, INC.  
CORINTH, KY

SHEET NUMBER

# REAR ELEVATION

SCALE 1/4" = 1'-0"



CONTOUR RIDGE VENT

CLASS 'A' FIBERGLASS SHINGLES OVER 30 LB. FELT OVER 7/16" OSB SHEATHING WITH 4" CLIPS

5" PRE-FINISHED ALU. EAVE GUTTER

4" BEVELED VINYL SIDING OVER TYVEK HOUSE WRAP ON 7/16" OSB SHEATHING

CORNER BOARD

PRE-FINISHED ALUM. DOWNSPOUT TIE TO DRAIN BOOT AND 4" PIPE DRAIN

GRADE

FOOTER/FOUNDATION SYSTEM BELOW

8  
12

DATE: 09.22.08  
 REVISED: 11.18.09  
 REVISED:  
 DRAWN BY: RCP  
 JOB NO: KL1440ES



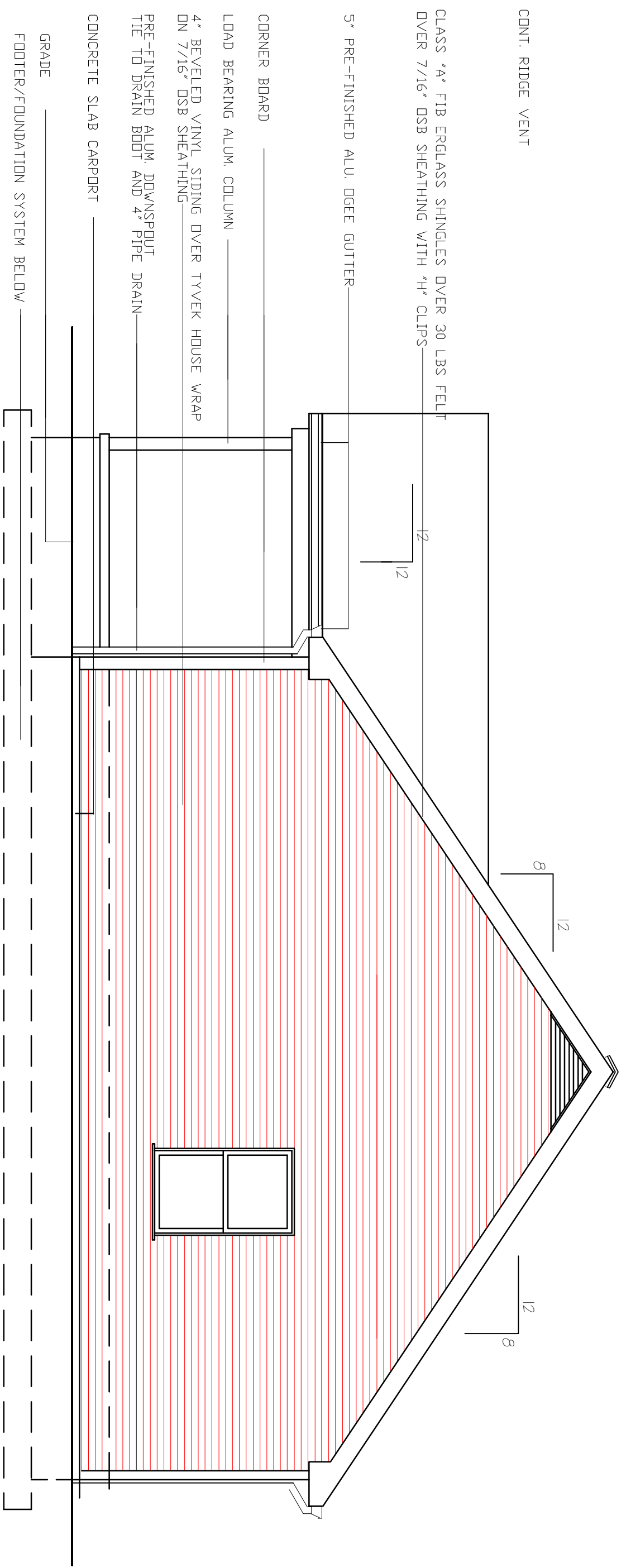
RANDALL C. BURCHETT & ASSOCIATES  
 ARCHITECT  
 322 WEST COURT ST. PRESTONSBURG, KENTUCKY 41653  
 PH. 606.886.3929 FAX. 606.886.0289

KL1440ES

KRISS LOWRY & ASSOCIATES, INC.  
 CORINTH, KY

SHEET NUMBER

A5



RIGHT SIDE ELEVATION SCALE 1/4" = 1'-0"

DATE: 09.22.08  
 REVISED: 11.18.09  
 REVISED:  
 DRAWN BY: RCB  
 JOB NO: KL144OES



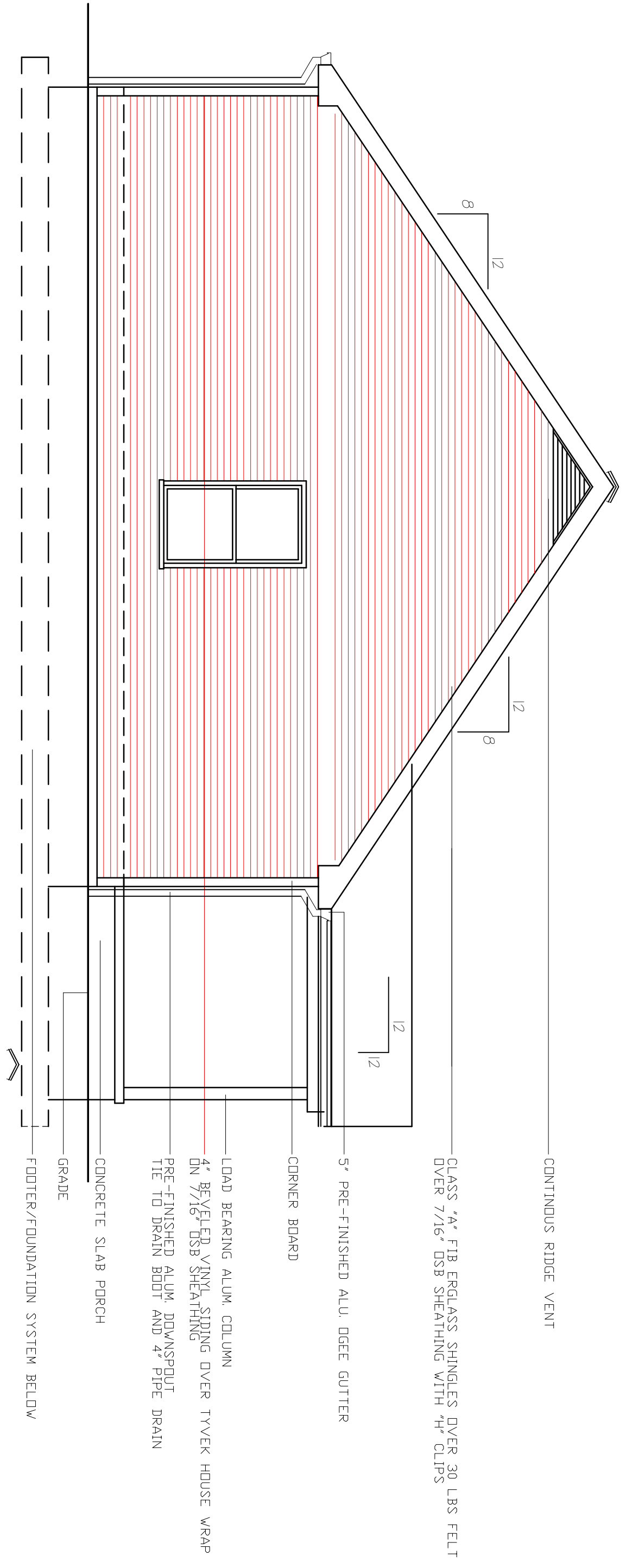
**RANDALL C. BURCHETT & ASSOCIATES**  
**ARCHITECT**  
 322 WEST COURT ST. PRESTONSBURG, KENTUCKY 41653  
 PH. 606.886.3929 FAX. 606.886.0289

KL144OES

KRISS LOWRY & ASSOCIATES, INC.  
 CORINTH, KY

SHEET NUMBER

AG



LEFT SIDE ELEVATION

SCALE 1/4" = 1'-0"

- CONTINUOUS RIDGE VENT
- CLASS "A" FIB ERGLASS SHINGLES OVER 30 LBS FELT OVER 7/16" OSB SHEATHING WITH 4" CLIPS
- 5' PRE-FINISHED ALU. EGEE GUTTER
- CORNER BOARD
- LOAD BEARING ALUM. COLUMN
- 4" BEVELED VINYL SIDING OVER TYVEK HOUSE WRAP ON 7/16" OSB SHEATHING
- PRE-FINISHED ALUM. DOWNSPOUT TIE TO DRAIN BOOT AND 4" PIPE DRAIN
- CONCRETE SLAB PORCH
- GRADE
- FOOTER/FOUNDATION SYSTEM BELOW

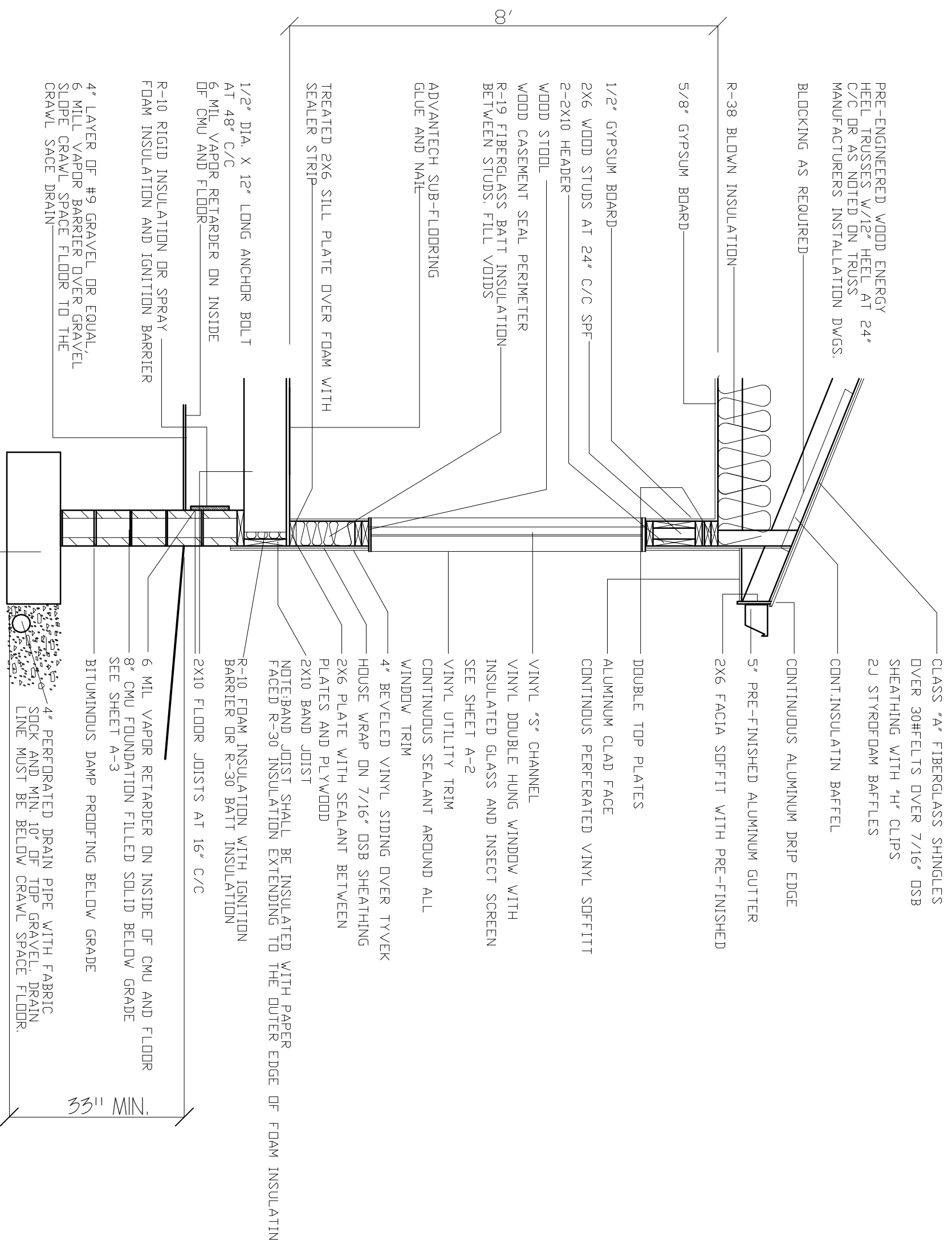
DATE:	12.02.10
REVISED:	02.04.11
REVISED:	10-21-11
REVISED:	
DRAWN BY:	RCB
JOB NO:	ES-A



RANDALL C. BURCHETT & ASSOCIATES  
ARCHITECT  
233 WEST COURT STREET, PRESTONSBURG, KENTUCKY 41653  
PH. 606.886.3929 FAX. 606.886.0289

KRISS LOWRY & ASSOCIATES, INC.  
CORINTH, KY

SHEET NUMBER



PRE-ENGINEERED WOOD ENERGY  
HEEL TRUSSES W/12" HEEL AT 24"  
C/C OR AS NOTED ON TRUSS  
MANUFACTURERS INSTALLATION DWGS.

BLOCKING AS REQUIRED

R-38 BLOWN INSULATION

5/8" GYPSUM BOARD

1/2" GYPSUM BOARD

2X6 WOOD STUDS AT 24" C/C SPF

2-2X10 HEADER

WOOD STOOD

WOOD CASEMENT SEAL PERIMETER

R-19 FIBERGLASS BATT INSULATION  
BETWEEN STUDS. FILL VOIDS

ADVANTECH SUB-FLOORING  
GLUE AND NAIL

TREATED 2X6 SILL PLATE OVER FOAM WITH  
SEALER STRIP

1/2" DIA. X 12" LONG ANCHOR BOLT  
AT 48" C/C

6 MIL VAPOR RETARDER ON INSIDE  
OF CMU AND FLOOR

R-10 RIGID INSULATION OR SPRAY  
FOAM INSULATION AND IGNITION BARRIER

4" LAYER OF #9 GRAVEL OR EQUAL,  
6 MIL VAPOR BARRIER OVER GRAVEL,  
SLOPE CRAWL SPACE FLOOR TO THE  
CRAWL SPACE DRAIN

CLASS "A" FIBERGLASS SHINGLES  
OVER 30#FELTS OVER 7/16" OSB  
SHEATHING WITH "H" CLIPS  
2J STYROFOAM BAFFLES

CONT. INSULATIN BAFFEL

CONTINUOUS ALUMINUM DRIP EDGE

5" PRE-FINISHED ALUMINUM GUTTER

2X6 FACIA SOFFIT WITH PRE-FINISHED

DOUBLE TOP PLATES

ALUMINUM CLAD FACE  
CONTINUOUS PERFERATED VINYL SOFFIT

VINYL "S" CHANNEL

VINYL DOUBLE HUNG WINDOW WITH  
INSULATED GLASS AND INSECT SCREEN  
SEE SHEET A-2

VINYL UTILITY TRIM  
CONTINUOUS SEALANT AROUND ALL  
WINDOW TRIM

4" BEVELED VINYL SIDING OVER TYVEK

HOUSE WRAP ON 7/16" OSB SHEATHING  
2X6 PLATE WITH SEALANT BETWEEN  
PLATES AND PLYWOOD

2X10 BAND JOIST

NOTE: BAND JOIST SHALL BE INSULATED WITH PAPER  
FACED R-30 INSULATION EXTENDING TO THE OUTER EDGE OF FOAM INSULATIN

R-10 FOAM INSULATION WITH IGNITION  
BARRIER OR R-30 BATT INSULATION

2X10 FLOOR JOISTS AT 16" C/C

6 MIL VAPOR RETARDER ON INSIDE OF CMU AND FLOOR  
8" CMU FOUNDATION FILLED SOLID BELOW GRADE  
SEE SHEET A-3

BITUMINOUS DAMP PROOFING BELOW GRADE

4" PERFORATED DRAIN PIPE WITH FABRIC  
SOCK AND MIN. 10" OF TOP GRAVEL. DRAIN  
LINE MUST BE BELOW CRAWL SPACE FLOOR.

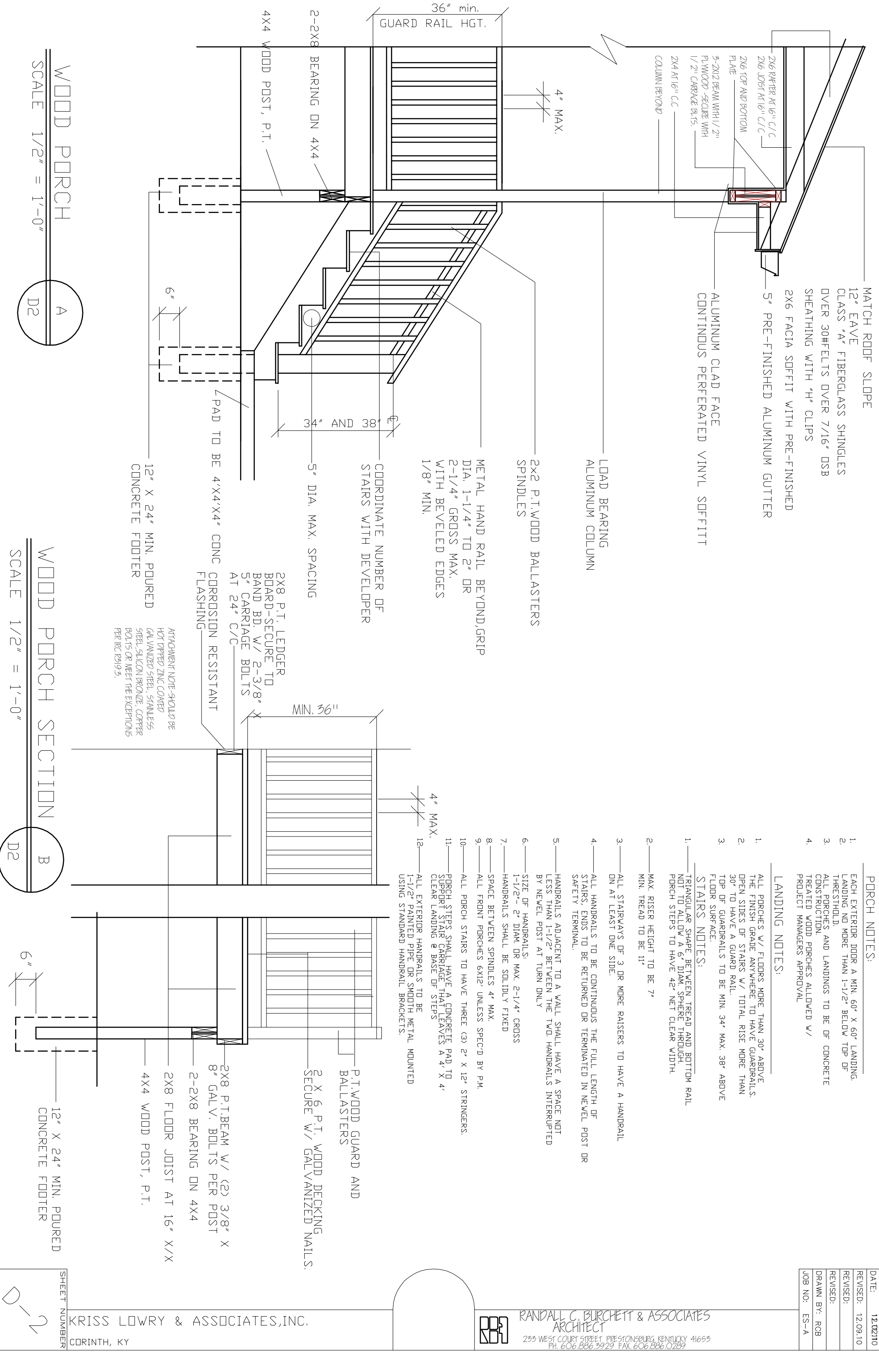
CONT. CONCRETE FOOTING REINFORCED WITH (2)  
#4 BARS CONT. AND #4 REBAR PERPENDICULAR  
@ 4" C/C-SEE FOUNDATION PLAN SHEET A-3

# TYPICAL WALL SECTION

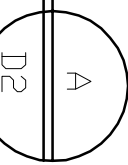
SCALE 1/2" = 1'-0"

33" MIN.

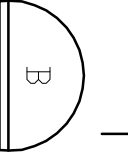




WOOD PORCH  
SCALE 1/2" = 1'-0"



WOOD PORCH SECTION  
SCALE 1/2" = 1'-0"



MATCH ROOF SLOPE  
12" EAVE  
CLASS "A" FIBERGLASS SHINGLES  
OVER 30# FELTS OVER 7/16" OSB  
SHEATHING WITH "H" CLIPS  
2X6 FACIA SOFFIT WITH PRE-FINISHED  
5" PRE-FINISHED ALUMINUM GUTTER  
ALUMINUM CLAD FACE  
CONTINUOUS PERFORATED VINYL SOFFIT

LOAD BEARING  
ALUMINUM COLUMN

2X2 P.T. WOOD BALLASTERS  
SPINDLES

METAL HAND RAIL BEYOND GRIP  
DIA. 1-1/4" TO 2" OR  
2-1/4" GROSS MAX.  
WITH BEVELED EDGES  
1/8" MIN.

COORDINATE NUMBER OF  
STAIRS WITH DEVELOPER

5" DIA. MAX. SPACING

12" X 24" MIN. POURED  
CONCRETE FOOTER

ATTACHMENT NOTE - SHOULD BE  
HOT DIPPED ZINC COATED  
GALVANIZED STEEL, STAINLESS  
STEEL, SILICON BRONZE, COPPER  
POLYS OR MEET THE EXCEPTIONS  
PER IRC R319.5.

- PORCH NOTES:
1. EACH EXTERIOR DOOR A MIN. 60" X 60" LANDING. LANDING NO MORE THAN 1-1/2" BELOW TOP OF THRESHOLD.
  2. ALL PORCHES AND LANDINGS TO BE OF CONCRETE CONSTRUCTION.
  3. TREATED WOOD PORCHES ALLOWED W/ PROJECT MANAGERS APPROVAL
  - 4.

LANDING NOTES:

1. ALL PORCHES W/ FLOORS MORE THAN 30" ABOVE THE FINISH GRADE ANYWHERE TO HAVE GUARDRAILS. OPEN SIDES OF STAIRS W/ TOTAL RISE MORE THAN 30" TO HAVE A GUARD RAIL.
2. TOP OF GUARDRAILS TO BE MIN. 34" MAX. 38" ABOVE FLOOR SURFACE.
3. STAIRS NOTES:

1. TRIANGULAR SHAPE BETWEEN TREAD AND BOTTOM RAIL NOT TO ALLOW A 6" DIAM. SPHERE THROUGH. PORCH STEPS TO HAVE 42" NET CLEAR WIDTH.
2. MAX. RISER HEIGHT TO BE 7"
3. MIN. TREAD TO BE 11"

3. ALL STAIRWAYS OF 3 OR MORE RAISERS TO HAVE A HANDRAIL ON AT LEAST ONE SIDE.
4. ALL HANDRAILS TO BE CONTINUOUS THE FULL LENGTH OF STAIRS. ENDS TO BE RETURNED OR TERMINATED IN NEVEL POST OR SAFETY TERMINAL.

5. HANDRAILS ADJACENT TO A WALL SHALL HAVE A SPACE NOT LESS THAN 1-1/2" BETWEEN THE TWO HANDRAILS INTERRUPTED BY NEVEL POST AT TURN ONLY
6. SIZE OF HANDRAILS:  
1-1/2" - 2" DIAM. OR MAX. 2-1/4" CROSS

7. HANDRAILS SHALL BE SOLIDLY FIXED
8. SPACE BETWEEN SPINDLES 4" MAX.
9. ALL FRONT PORCHES 6X12' UNLESS SPEC'D BY P.M.

10. ALL PORCH STAIRS TO HAVE THREE (3) 2" X 12" STRINGERS.
11. PORCH STEPS SHALL HAVE A CONCRETE PAD TO SUPPORT STAIR CARRIAGE THAT LEAVES A 4" X 4" CLEAR LANDING @ BASE OF STEPS

12. ALL EXTERIOR HANDRAILS TO BE 1-1/2" PAINTED PIPE OR SMOOTH METAL MOUNTED USING STANDARD HANDRAIL BRACKETS.

P.T. WOOD GUARD AND  
BALLASTERS  
2 X 6 P.T. WOOD DECKING  
SECURE W/ GALVANIZED NAILS.

2X8 P.T. BEAM W/ (2) 3/8" X  
8" GALV. BOLTS PER POST  
2-2X8 BEARING ON 4X4  
2X8 FLOOR JOIST AT 16" X/X  
4X4 WOOD POST, P.T.

12" X 24" MIN. POURED  
CONCRETE FOOTER

DATE: 12.02.10  
REVISED: 12.09.10  
REVISED:  
DRAWN BY: RCB  
JOB NO: ES-A



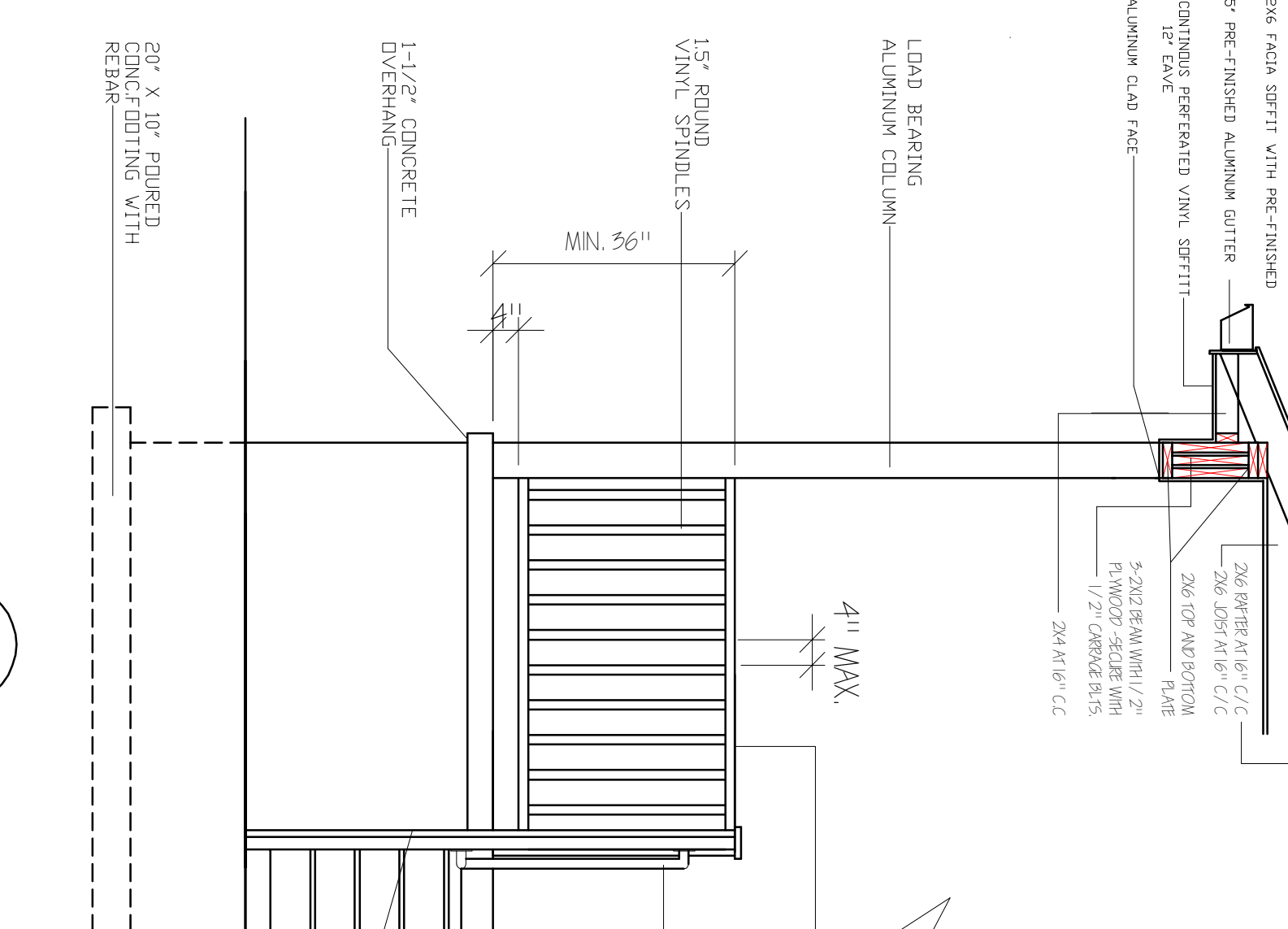
RANDALL C. BURCHETT & ASSOCIATES  
ARCHITECT  
233 WEST COURT STREET PRESTONSBURG, KENTUCKY 41653  
PH. 606.886.3929 FAX. 606.886.0289

KRISS LOWRY & ASSOCIATES, INC.  
CORINTH, KY

SHEET NUMBER  
CORINTH, KY

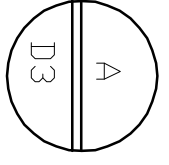
MATCH ROOF SLOPE

CLASS "A" FIBERGLASS SHINGLES  
OVER 30HELTS OVER 7/16" OSB  
SHEATHING WITH "H" CLIPS

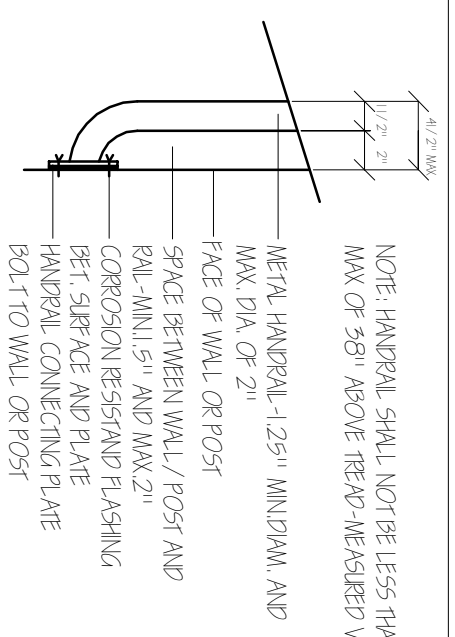


RAISED PORCH SLAB

SCALE 1/2" = 1'-0"



HANDRAIL CONNECTION DETAIL  
NT5.



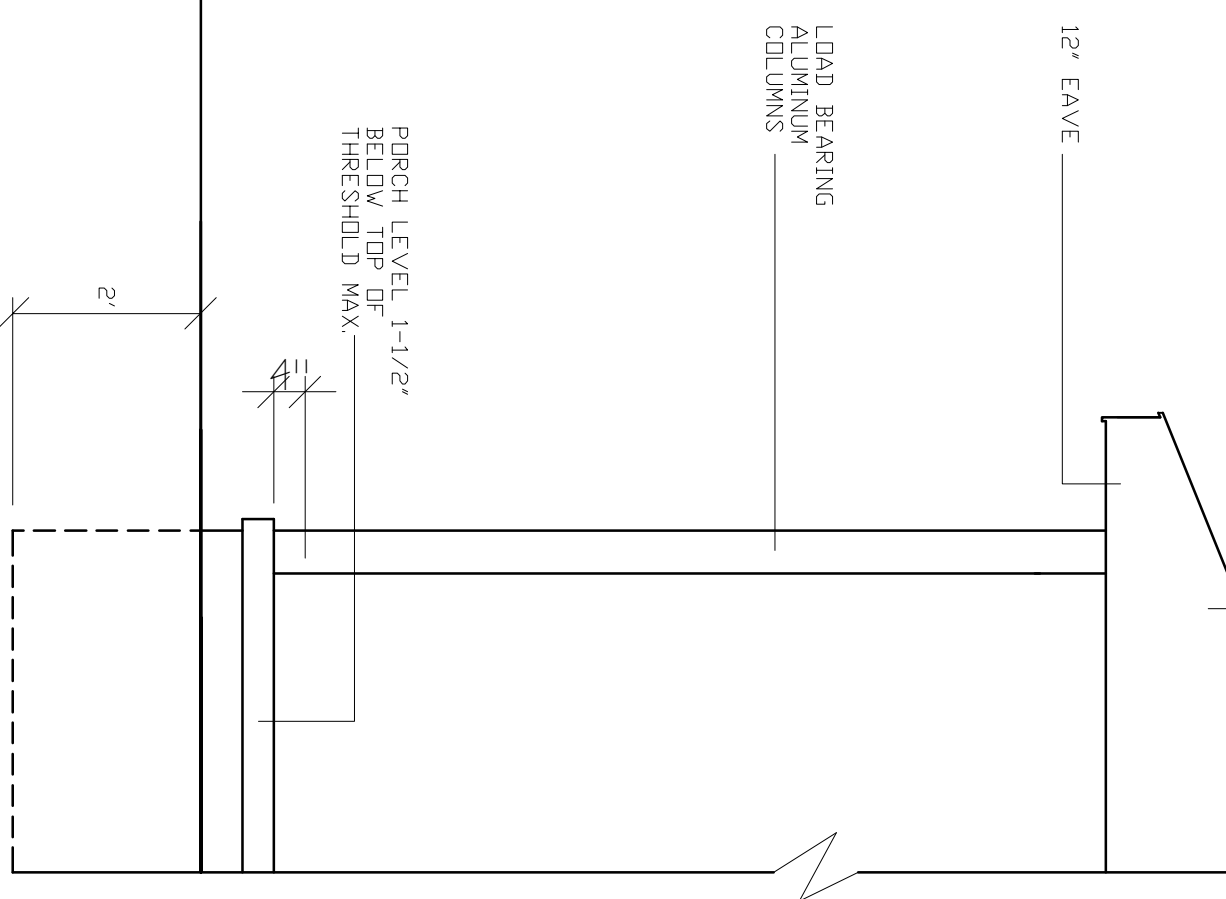
VINYL TOP RAIL GRIP SIZE  
DIA. 1-1/4" TO 2" OR  
2-1/4" GROSS MAX.  
WITH BEVELED EDGES  
1/8" MIN.

METAL HANDRAIL, MIN 34"  
MAX-38"  
SEE SHEET D-2

PORCH SLABS TO INCLUDE:  
4" MIN. THICKNESS  
6" WIRE MESH  
CRUSHED STONE GRADED 1/4" - 3/4"  
COVERED WITH VAPOR BARRIER  
EXP. JOINTS @ WALLS  
1-1/2" OVERHANDS  
1/8" / 12" SLOPE AWAY FROM HOUSE

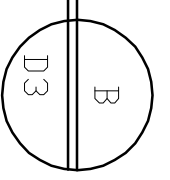
4X4 VINYL POST  
SET IN CONCRETE

MATCH ROOF SLOPE  
SEE DETAIL A/D3



@GRADE PORCH SLAB

SCALE 1/2" = 1'-0"



DATE:	11.11.11
REVISED:	
REVISD:	
REVISD:	
DRAWN BY:	RCB
JOB NO:	ES-A



RANDALL C. BURCHETT & ASSOCIATES  
ARCHITECT  
233 WEST COURT STREET, PRESTONSBURG, KENTUCKY 41653  
PH. 606.886.3929 FAX. 606.886.0289

KRISS LOWRY & ASSOCIATES  
CORINTH, KY

SHEET NUMBER

